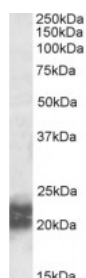




NPC2 Antibody

CATALOG NUMBER: 42-795



Western Blot (0.5ug/ml) staining of Human Testis lysate (35ug protein in RIPA buffer). Primary incubation was 1 hour. Detected by chemiluminescence.

Specifications

SPECIES REACTIVITY:	Human
TESTED APPLICATIONS:	ELISA, WB
APPLICATIONS:	ELISA: antibody detection limit dilution 1:2000. Western Blot: Experiments gave bands at approx 20kDa and 23kDa in Human Testis lysates. These bands correspond to earlier findings in literature with different antibodies (Légaré et al, Mol Hum Reprod. 2006 Jul;12(7):461-8; PMID: 16772431. This protein
POSITIVE CONTROL:	1) Cat. No. 1313 - Human Testis Tissue Lysate
IMMUNOGEN:	NPC2 antibody was raised against a 14 amino acid synthetic peptide near the internal region of NPC2.
HOST SPECIES:	Goat

Properties

PURIFICATION:	Antibody was purified from goat serum by ammonium sulphate precipitation followed by antigen affinity chromatography using the immunizing peptide.
PHYSICAL STATE:	Liquid
BUFFER:	NPC2 antibody is supplied in Tris saline, 0.02% sodium azide, pH 7.3 with 0.5% bovine serum albumin.
CONCENTRATION:	500 ug/mL
STORAGE CONDITIONS:	Aliquot and store at -20°C. Minimize freezing and thawing.
CLONALITY:	Polyclonal
CONJUGATE:	Unconjugated

Additional Info

ALTERNATE NAMES:	NPC2, tissue-specific secretory protein, NP-C2, Niemann-Pick disease, type C2, MGC1333, HE1, epididymal secretory protein E1, epididymal secretory protein, epididymal protein 1, EDDM1
ACCESSION NO.:	NP_006423.1
PROTEIN GI NO.:	5453678
OFFICIAL SYMBOL:	NPC2

GENE ID: 10577

Background

FOR RESEARCH USE ONLY

December 13, 2016