

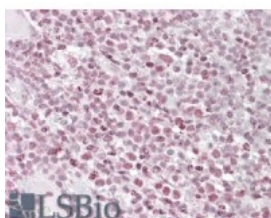


IKZF1 Antibody

CATALOG NUMBER: 42-782



Western Blot (1ug/ml) staining of MOLT4 lysate (35ug protein in RIPA buffer). Primary incubation was 1 hour. Detected by chemiluminescence.



Immunohistochemistry (3.8ug/ml) staining of paraffin embedded Human Tonsil. Steamed antigen retrieval with citrate buffer pH 6, AP-staining.

Specifications

SPECIES REACTIVITY:	Human
TESTED APPLICATIONS:	ELISA, IHC-P, WB
APPLICATIONS:	ELISA: antibody detection limit dilution 1:1000. Western Blot: Approx 65kDa band observed in lysates of cell line MOLT4 (calculated MW of 57.5kDa according to NP_006051.1). Recommended concentration: 1-3ug/ml. Similar results were obtained with EB07847, which was developed against a different part of t Immunohistochemistry: In paraffin embedded Human Tonsil shows textured staining in some nuclei of the lymphoid tissue. Recommended concentration, 2.5-3.8ug/ml.
POSITIVE CONTROL:	1) Cat. No. 1205 - MOLT4 Cell Lysate
IMMUNOGEN:	IKZF1 antibody was raised against a 14 amino acid synthetic peptide near the internal region of IKZF1.
HOST SPECIES:	Goat

Properties

PURIFICATION:	Antibody was purified from goat serum by ammonium sulphate precipitation followed by antigen affinity chromatography using the immunizing peptide.
PHYSICAL STATE:	Liquid
BUFFER:	IKZF1 antibody is supplied in Tris saline, 0.02% sodium azide, pH 7.3 with 0.5% bovine serum albumin.
CONCENTRATION:	500 ug/mL
STORAGE CONDITIONS:	Aliquot and store at -20°C. Minimize freezing and thawing.
CLONALITY:	Polyclonal
CONJUGATE:	Unconjugated

Additional Info

ALTERNATE NAMES:	lymphoid transcription factor LyF-1, zinc finger protein, subfamily 1A, 1 (Ikaros), Ikaros (zinc finger protein), CLL-associated antigen KW-6, hlk-1, ZNF1A1, PRO0758, LYF1, IKAROS, IK1, Hs.54452, IKAROS family zinc finger 1 (Ikaros), IKZF1
ACCESSION NO.:	NP_006051.1

PROTEIN GI NO.: 5174501

OFFICIAL SYMBOL: IKZF1

GENE ID: 10320

Background

FOR RESEARCH USE ONLY

December 13, 2016