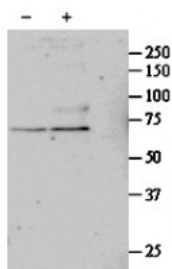




SRF Antibody

CATALOG NUMBER: 42-777



Western Blot (1ug/ml) staining of untreated (first lane) and TGF- β -treated (second lane) primary cultured Human Lung fibroblast lysate. Primary incubated overnight at 4C. Detected by western blot using chemiluminescence. Data kindly provided by Nickolai Dulin

Specifications

SPECIES REACTIVITY:	Human
TESTED APPLICATIONS:	ELISA, WB
APPLICATIONS:	ELISA: antibody detection limit dilution 1:32000. Western Blot: Approx 67kDa band observed in primary cultured Human Lung fibroblasts lysates after 24 h treatment with 1ng/ml TGF- β l (calculated MW of 51.6kDa according to NP_003122.1). The observed molecular weight corresponds to earlier findings in lit
IMMUNOGEN:	SRF antibody was raised against a 14 amino acid synthetic peptide near the internal region of SRF.
HOST SPECIES:	Goat

Properties

PURIFICATION:	Antibody was purified from goat serum by ammonium sulphate precipitation followed by antigen affinity chromatography using the immunizing peptide.
PHYSICAL STATE:	Liquid
BUFFER:	SRF antibody is supplied in Tris saline, 0.02% sodium azide, pH 7.3 with 0.5% bovine serum albumin.
CONCENTRATION:	500 ug/mL
STORAGE CONDITIONS:	Aliquot and store at -20°C. Minimize freezing and thawing.
CLONALITY:	Polyclonal
CONJUGATE:	Unconjugated

Additional Info

ALTERNATE NAMES:	OTTHUMP00000039820, MCM1, serum response factor (c-fos serum response element-binding transcription factor), SRF
ACCESSION NO.:	NP_003122.1
PROTEIN GI NO.:	4507205

OFFICIAL SYMBOL: SRF

GENE ID: 6722

Background

FOR RESEARCH USE ONLY

December 13, 2016