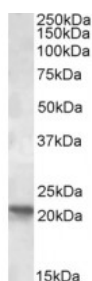




POLR2G Antibody

CATALOG NUMBER: 42-776



Approx 21kDa band observed in Human Brain (Cerebellum) lysates (calculated MW of 19.3kDa according to NP_002687.1).
Recommended concentration: 1-3ug/ml.

Specifications

SPECIES REACTIVITY:	Human
TESTED APPLICATIONS:	ELISA, WB
APPLICATIONS:	ELISA: antibody detection limit dilution 1:1000. Western Blot: Approx 21kDa band observed in Human Brain (Cerebellum) lysates (calculated MW of 19.3kDa according to NP_002687.1). Recommended concentration: 1-3ug/ml.
POSITIVE CONTROL:	1) Cat. No. 1362 - Human Cerebellum, Left Lysate Cat. No. 1363 - Human Cerebellum, Right Lysate
IMMUNOGEN:	POLR2G antibody was raised against a 12 amino acid synthetic peptide near the internal region of POLR2G.
HOST SPECIES:	Goat

Properties

PURIFICATION:	Antibody was purified from goat serum by ammonium sulphate precipitation followed by antigen affinity chromatography using the immunizing peptide.
PHYSICAL STATE:	Liquid
BUFFER:	POLR2G antibody is supplied in Tris saline, 0.02% sodium azide, pH 7.3 with 0.5% bovine serum albumin.
CONCENTRATION:	500 ug/mL
STORAGE CONDITIONS:	Aliquot and store at -20°C. Minimize freezing and thawing.
CLONALITY:	Polyclonal
CONJUGATE:	Unconjugated

Additional Info

ALTERNATE NAMES:	RNA polymerase II seventh subunit, DNA directed RNA polymerase II polypeptide G, DNA directed RNA polymerase II 19 kda polypeptide, hsrPB7, hRPB19, RPB7, MGC138369, MGC138367, polymerase (RNA) II (DNA directed) polypeptide G, POLR2G
ACCESSION NO.:	NP_002687.1
PROTEIN GI NO.:	4505947

OFFICIAL SYMBOL: POLR2G

GENE ID: 5436

Background

FOR RESEARCH USE ONLY

December 13, 2016