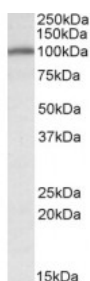


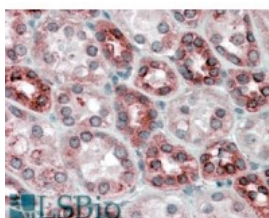


## CANX Antibody

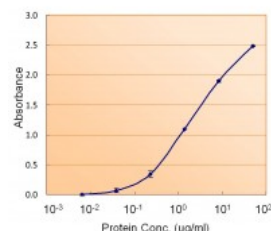
CATALOG NUMBER: 42-774



Western Blot (0.3ug/ml) staining of Mouse Heart lysate (35ug protein in RIPA buffer). Primary incubation was 1 hour. Detected by chemiluminescence.



Immunohistochemistry (3.8ug/ml) staining of paraffin embedded Human Kidney. Steamed antigen retrieval with citrate buffer pH 6, AP-staining.



Antibody used in Sandwich ELISA as detection antibody at (1.5ug/ml).

### Specifications

<b>SPECIES REACTIVITY:</b>	Human, Mouse
<b>TESTED APPLICATIONS:</b>	EIA, ELISA, IHC-P, WB
<b>APPLICATIONS:</b>	ELISA: antibody detection limit dilution 1:32000. Western Blot: Approx. 100kDa band observed in Mouse Heart, Human Brain (Cerebellum), NIH3T3 and HeLa lysates (calculated MW of 67.6kDa according to Human NP_001737.1 and 67.2kDa according to Mouse NP_001103969.1). The observed molecular weight correspond Immunohistochemistry: In paraffin embedded Human Kidney shows textured staining in the cytoplasm of DCT cells,. Recommended concentration, 3-6ug/ml. Enzyme immunoassay: Sandwich-type ELISA with increasing amount of recombinant Calnexin captured by a rabbit antibody. Recommended reporter concentration: 1-2ug/ml
<b>POSITIVE CONTROL:</b>	1) Cat. No. 1401 - Mouse Heart Tissue Lysate 2) Cat. No. 1301 - Human Heart Tissue Lysate 3) Cat. No. 1282 - 3T3 (NIH) Cell Lysate 4) Cat. No. 1201 - HeLa Cell Lysate
<b>SPECIFICITY:</b>	Reported variants represent identical protein (NP_001019820.1, NP_001737.1).
<b>IMMUNOGEN:</b>	CANX antibody was raised against a 15 amino acid synthetic peptide near the internal region (near N-Terminus) of CANX (near N-Terminus).
<b>HOST SPECIES:</b>	Goat

### Properties

<b>PURIFICATION:</b>	Antibody was purified from goat serum by ammonium sulphate precipitation followed by antigen affinity chromatography using the immunizing peptide.
<b>PHYSICAL STATE:</b>	Liquid
<b>BUFFER:</b>	CANX antibody is supplied in Tris saline, 0.02% sodium azide, pH 7.3 with 0.5% bovine serum albumin.
<b>CONCENTRATION:</b>	500 ug/mL
<b>STORAGE CONDITIONS:</b>	Aliquot and store at -20°C. Minimize freezing and thawing.
<b>CLONALITY:</b>	Polyclonal
<b>CONJUGATE:</b>	Unconjugated

---

**Additional Info**

<b>ALTERNATE NAMES:</b>	major histocompatibility complex class I antigen-binding protein p88, P90, IP90, FLJ26570, CNX, calnexin, CANX
<b>ACCESSION NO.:</b>	NP_001737.1
<b>PROTEIN GI NO.:</b>	10716563
<b>OFFICIAL SYMBOL:</b>	CANX
<b>GENE ID:</b>	821

---

**Background**

FOR RESEARCH USE ONLY

December 13, 2016