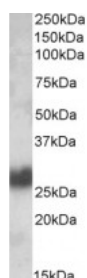




## THY1 Antibody

CATALOG NUMBER: 42-767



Western Blot (0.1ug/ml) staining of Human Tonsil lysate (35ug protein in RIPA buffer). Primary incubation was 1 hour. Detected by chemiluminescence.

### Specifications

<b>APPLICATIONS:</b>	ELISA: antibody detection limit dilution 1:64000. Western Blot: Approx 26kDa band observed in Human Brain (Cerebellum) and Human Tonsil lysates (calculated MW of 17.9kDa according to NP_006279.2). The observed molecular weight corresponds to earlier findings with different antibodies from other commercial sources.
<b>POSITIVE CONTROL:</b>	1) Cat. No. 1362 - Human Cerebellum, Left Lysate Cat. No. 1363 - Human Cerebellum, Right Lysate 2) Cat. No. 1315 - Human Tonsil Tissue Lysate
<b>IMMUNOGEN:</b>	THY1 antibody was raised against a 15 amino acid synthetic peptide near the internal region of THY1.
<b>HOST SPECIES:</b>	Goat

### Properties

<b>PURIFICATION:</b>	Antibody was purified from goat serum by ammonium sulphate precipitation followed by antigen affinity chromatography using the immunizing peptide.
<b>PHYSICAL STATE:</b>	Liquid
<b>BUFFER:</b>	THY1 antibody is supplied in Tris saline, 0.02% sodium azide, pH 7.3 with 0.5% bovine serum albumin.
<b>CONCENTRATION:</b>	500 ug/mL
<b>STORAGE CONDITIONS:</b>	Aliquot and store at -20°C. Minimize freezing and thawing.
<b>CLONALITY:</b>	Polyclonal
<b>CONJUGATE:</b>	Unconjugated

### Additional Info

<b>ALTERNATE NAMES:</b>	Thy-1 membrane glycoprotein, Thy-1 T-cell antigen, FLJ33325, CD90, Thy-1 cell surface antigen, THY1
<b>ACCESSION NO.:</b>	NP_006279.2
<b>PROTEIN GI NO.:</b>	19923362
<b>OFFICIAL SYMBOL:</b>	THY1
<b>GENE ID:</b>	7070

