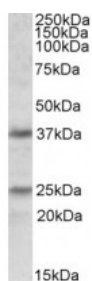




## PDPN Antibody

CATALOG NUMBER: 42-765



Western Blot (1ug/ml) staining of Human Cerebellum lysate (35ug protein in RIPA buffer). Primary incubation was 1 hour. Detected by chemiluminescence.

### Specifications

<b>SPECIES REACTIVITY:</b>	Human
<b>TESTED APPLICATIONS:</b>	ELISA, WB
<b>APPLICATIONS:</b>	ELISA: antibody detection limit dilution 1:1000. Western Blot: Experiments gave bands at approx 25kDa and 37kDa in Human Brain (Cerebellum) lysates after 1ug/ml antibody staining. The 37kDa band corresponds to earlier findings in literature with different antibodies (Boucherot et al, Nephrol Dial Trans
<b>POSITIVE CONTROL:</b>	1) Cat. No. 1362 - Human Cerebellum, Left Lysate Cat. No. 1363 - Human Cerebellum, Right Lysate
<b>SPECIFICITY:</b>	This antibody is expected to recognize all isoforms (NP_006465.3; NP_938203.2; NP_001006625.1; NP_001006626.1).
<b>IMMUNOGEN:</b>	PDPN antibody was raised against a 14 amino acid synthetic peptide near the internal region of PDPN.
<b>HOST SPECIES:</b>	Goat

### Properties

<b>PURIFICATION:</b>	Antibody was purified from goat serum by ammonium sulphate precipitation followed by antigen affinity chromatography using the immunizing peptide.
<b>PHYSICAL STATE:</b>	Liquid
<b>BUFFER:</b>	PDPN antibody is supplied in Tris saline, 0.02% sodium azide, pH 7.3 with 0.5% bovine serum albumin.
<b>CONCENTRATION:</b>	500 ug/mL
<b>STORAGE CONDITIONS:</b>	Aliquot and store at -20°C. Minimize freezing and thawing.
<b>CLONALITY:</b>	Polyclonal
<b>CONJUGATE:</b>	Unconjugated

### Additional Info

<b>ALTERNATE NAMES:</b>	lung type-I cell membrane-associated glycoprotein (T1A-2), lung type-I cell membrane-associated glycoprotein, lung type I cell membrane associated glycoprotein, hT1alpha-2, hT1alpha-1, glycoprotein, 36-KD, OTTHUMP00000044504, OTTHUMP00000009640, T1A-2, T1A, PA2.26, OTS8, HT1A-1, Gp38, GP40, GP36,
-------------------------	---

AGGRUS, podoplanin, PDPN, PSEC0003, PSEC0025

ACCESSION NO.:	NP_006465.3, NP_938203.2, NP_001006625.1, NP_001006626.1
PROTEIN GI NO.:	54792056
OFFICIAL SYMBOL:	PDPN
GENE ID:	10630

## Background

FOR RESEARCH USE ONLY

December 13, 2016