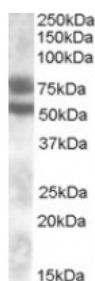




## DACH1 Antibody

CATALOG NUMBER: 42-747



Western Blot (0.1ug/ml) staining of Human Kidney lysate (35ug protein in RIPA buffer). Primary incubation was 1 hour. Detected by chemiluminescence.

### Specifications

<b>SPECIES REACTIVITY:</b>	Human
<b>TESTED APPLICATIONS:</b>	ELISA, WB
<b>APPLICATIONS:</b>	ELISA: antibody detection limit dilution 1:16000. Western Blot: Approx 75 and 52kDa bands observed in Human Kidney lysates (calculated MW of 73.0kDa according to NP_542937.1 and of 51.9kDa according to NP_004383.2). Recommended concentration: 0.1-0.3ug/ml.
<b>POSITIVE CONTROL:</b>	1) Cat. No. 1305 - Human Kidney Tissue Lysate
<b>SPECIFICITY:</b>	This antibody is expected to recognise all three reported isoforms(NP_542937.1; NP_542938.1; NP_004383.2).
<b>IMMUNOGEN:</b>	DACH1 antibody was raised against a 13 amino acid synthetic peptide near the internal region of DACH1.
<b>HOST SPECIES:</b>	Goat

### Properties

<b>PURIFICATION:</b>	Antibody was purified from goat serum by ammonium sulphate precipitation followed by antigen affinity chromatography using the immunizing peptide.
<b>PHYSICAL STATE:</b>	Liquid
<b>BUFFER:</b>	DACH1 antibody is supplied in Tris saline, 0.02% sodium azide, pH 7.3 with 0.5% bovine serum albumin.
<b>CONCENTRATION:</b>	500 ug/mL
<b>STORAGE CONDITIONS:</b>	Aliquot and store at -20°C. Minimize freezing and thawing.
<b>CLONALITY:</b>	Polyclonal
<b>CONJUGATE:</b>	Unconjugated

### Additional Info

<b>ALTERNATE NAMES:</b>	dachshund homolog 1, FLJ10138, DACH, RP11-512J14.1, DACH1, dachshund homolog 1 (Drosophila), OTTHUMP00000040839
<b>ACCESSION NO.:</b>	NP_542937.1, NP_542938.1, NP_004383.2
<b>PROTEIN GI NO.:</b>	18375611

OFFICIAL SYMBOL: DACH1

GENE ID: 1602

## Background

FOR RESEARCH USE ONLY

December 13, 2016