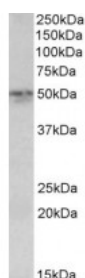




## SYT2 Antibody

CATALOG NUMBER: 42-713



Western Blot (0.1ug/ml) staining of Mouse Lung lysate (35ug protein in RIPA buffer). Primary incubation was 1 hour. Detected by chemiluminescence.

### Specifications

<b>SPECIES REACTIVITY:</b>	Mouse
<b>TESTED APPLICATIONS:</b>	ELISA, WB
<b>APPLICATIONS:</b>	ELISA: antibody detection limit dilution 1:128000. Western Blot: Approx 50kDa band observed in Mouse Lung lysates (calculated MW of 47.2kDa according to Mouse NP_033333.2). Recommended concentration: 0.1-0.3ug/ml.
<b>POSITIVE CONTROL:</b>	1) Cat. No. 1402 - Mouse Lung Tissue Lysate
<b>SPECIFICITY:</b>	Reported variants represent identical protein: NP_001129976.1, NP_796376.2
<b>IMMUNOGEN:</b>	SYT2 antibody was raised against a 14 amino acid synthetic peptide near the C-Terminus of SYT2.
<b>HOST SPECIES:</b>	Goat

### Properties

<b>PURIFICATION:</b>	SYT2 antibody was purified from goat serum by ammonium sulphate precipitation followed by antigen affinity chromatography using the immunizing peptide.
<b>PHYSICAL STATE:</b>	Liquid
<b>BUFFER:</b>	SYT2 antibody is supplied in Tris saline, 0.02% sodium azide, pH 7.3 with 0.5% bovine serum albumin.
<b>CONCENTRATION:</b>	500 ug/mL
<b>STORAGE CONDITIONS:</b>	Aliquot and store at -20°C. Minimize freezing and thawing.
<b>CLONALITY:</b>	Polyclonal
<b>CONJUGATE:</b>	Unconjugated

### Additional Info

<b>ALTERNATE NAMES:</b>	synaptotagmin-2, synaptotagmin 2, SytII, FLJ42519, synaptotagmin II, SYT2
<b>ACCESSION NO.:</b>	NP_796376.2
<b>PROTEIN GI NO.:</b>	31543670
<b>OFFICIAL SYMBOL:</b>	SYT2

Background

FOR RESEARCH USE ONLY

December 13, 2016