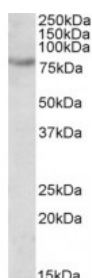




SIM2 Antibody

CATALOG NUMBER: 42-710



Western Blot (0.5ug/ml) staining of fetal Mouse kidney lysate (35ug protein in RIPA buffer). Primary incubation was 1 hour. Detected by chemiluminescence.

Specifications

SPECIES REACTIVITY:	Mouse
TESTED APPLICATIONS:	ELISA, WB
APPLICATIONS:	ELISA: antibody detection limit dilution 1:1000. Western Blot: Approx 80kDa band observed in fetal Mouse Kidney lysates (calculated MW of 73.2kDa according to Human NP_005060.1) and 72.5kDa according to Mouse NP_035507.2. Recommended concentration: 0.5-2ug/ml.
POSITIVE CONTROL:	1) Cat. No. 1405-0 - Mouse Kidney Tissue Lysate (0 Day Old)
SPECIFICITY:	This antibody is expected to recognize all reported isoforms (NP_005060.1; NP_033664.2).
IMMUNOGEN:	SIM2 antibody was raised against a 10 amino acid synthetic peptide near the internal region of SIM2.
HOST SPECIES:	Goat

Properties

PURIFICATION:	SIM2 antibody was purified from goat serum by ammonium sulphate precipitation followed by antigen affinity chromatography using the immunizing peptide.
PHYSICAL STATE:	Liquid
BUFFER:	SIM2 antibody is supplied in Tris saline, 0.02% sodium azide, pH 7.3 with 0.5% bovine serum albumin.
CONCENTRATION:	500 ug/mL
STORAGE CONDITIONS:	Aliquot and store at -20°C. Minimize freezing and thawing.
CLONALITY:	Polyclonal
CONJUGATE:	Unconjugated

Additional Info

ALTERNATE NAMES:	single-minded homolog 2, short isoform, single-minded homolog 2, class E basic helix-loop-helix protein 15, OTTHUMP00000109044, bHLHe15, SIM, MGC119447, single-minded homolog 2 (Drosophila), SIM2, BHLHE15
ACCESSION NO.:	NP_005060.1, NP_033664.2
PROTEIN GI NO.:	4827004

OFFICIAL SYMBOL: SIM2

GENE ID: 6493

Background

FOR RESEARCH USE ONLY

December 13, 2016