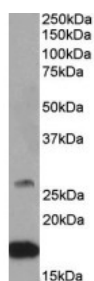




## CNTF Antibody

CATALOG NUMBER: 42-703



Western Blot (0.5ug/ml) staining of Mouse Brain lysate (35ug protein in RIPA buffer). Primary incubation was 1 hour. Detected by chemiluminescence.

### Specifications

<b>SPECIES REACTIVITY:</b>	Human, Mouse, Rat
<b>TESTED APPLICATIONS:</b>	ELISA, WB
<b>APPLICATIONS:</b>	ELISA: antibody detection limit dilution 1:2000. Western Blot: Approx 17+28kDa bands observed in Human, Mouse and Rat Brain lysates (calculated MW of 22.9kDa according to Human NP_000605.1 and 22.6kDa according to Mouse NP_740756.1). The observed molecular weights correspond to earlier findings with di
<b>POSITIVE CONTROL:</b>	1) Cat. No. 1303 - Human Brain Tissue Lysate 2) Cat. No. 1403 - Mouse Brain Tissue Lysate 3) Cat. No. 1463 - Rat Brain Tissue Lysate
<b>IMMUNOGEN:</b>	CNTF antibody was raised against a 12 amino acid synthetic peptide near the internal region of CNTF.
<b>HOST SPECIES:</b>	Goat

### Properties

<b>PURIFICATION:</b>	CNTF antibody was purified from goat serum by ammonium sulphate precipitation followed by antigen affinity chromatography using the immunizing peptide.
<b>PHYSICAL STATE:</b>	Liquid
<b>BUFFER:</b>	CNTF antibody is supplied in Tris saline, 0.02% sodium azide, pH 7.3 with 0.5% bovine serum albumin.
<b>CONCENTRATION:</b>	500 ug/mL
<b>STORAGE CONDITIONS:</b>	Aliquot and store at -20°C. Minimize freezing and thawing.
<b>CLONALITY:</b>	Polyclonal
<b>CONJUGATE:</b>	Unconjugated

### Additional Info

<b>ALTERNATE NAMES:</b>	CNTF, HCNTF, ciliary neurotrophic factor
<b>ACCESSION NO.:</b>	NP_000605.1
<b>PROTEIN GI NO.:</b>	4758020

OFFICIAL SYMBOL: CNTF

GENE ID: 1270

## Background

FOR RESEARCH USE ONLY

December 13, 2016