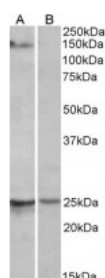




## RBM20 Antibody

CATALOG NUMBER: 42-687



Western Blot (1ug/ml) staining of Mouse Heart lysate (35ug protein in RIPA buffer) with (B) and without (A) blocking with the immunising peptide. Primary incubation was 1 hour. Detected by chemiluminescence.

### Specifications

<b>SPECIES REACTIVITY:</b>	Mouse
<b>TESTED APPLICATIONS:</b>	ELISA, WB
<b>APPLICATIONS:</b>	ELISA: antibody detection limit dilution 1:8000. Western Blot: Approx 150kDa band observed in Mouse Heart lysates (calculated MW of 130kDa according to Mouse NP_001164318.1). Recommended concentration: 1-3ug/ml. An additional band of 25kDa was consistently observed, however this band was not blocked by
<b>POSITIVE CONTROL:</b>	1) Cat. No. 1401 - Mouse Heart Tissue Lysate
<b>IMMUNOGEN:</b>	RBM20 antibody was raised against an 11 amino acid synthetic peptide near the internal region of RBM20 (aa 717-727).
<b>HOST SPECIES:</b>	Goat

### Properties

<b>PURIFICATION:</b>	RBM20 antibody was purified from goat serum by ammonium sulphate precipitation followed by antigen affinity chromatography using the immunizing peptide.
<b>PHYSICAL STATE:</b>	Liquid
<b>BUFFER:</b>	RBM20 antibody is supplied in Tris saline, 0.02% sodium azide, pH 7.3 with 0.5% bovine serum albumin.
<b>CONCENTRATION:</b>	500 ug/mL
<b>STORAGE CONDITIONS:</b>	Aliquot and store at -20°C. Minimize freezing and thawing.
<b>CLONALITY:</b>	Polyclonal
<b>CONJUGATE:</b>	Unconjugated

### Additional Info

<b>ALTERNATE NAMES:</b>	RBM20, RNA binding motif protein 20,
<b>ACCESSION NO.:</b>	NP_001127835.1
<b>PROTEIN GI NO.:</b>	197276594

OFFICIAL SYMBOL: RBM20

GENE ID: 282996

Background

FOR RESEARCH USE ONLY

December 13, 2016