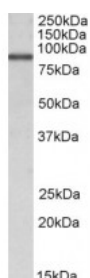


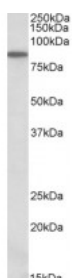


ALDH18A1 Antibody

CATALOG NUMBER: 42-675



Western Blot (1ug/ml) staining of MCF7 lysate (35ug protein in RIPA buffer). Primary incubation was 1 hour. Detected by chemiluminescence.



Western Blot (0.3ug/ml) staining of NIH3T3 lysate (35ug protein in RIPA buffer). Primary incubation was 1 hour. Detected by chemiluminescence.

Specifications

SPECIES REACTIVITY:	Human, Mouse
TESTED APPLICATIONS:	ELISA, WB
APPLICATIONS:	ELISA: antibody detection limit dilution 1:8000. Western Blot: Approx 85kDa band observed in lysates of cell lines NIH3T3 and MCF7 (calculated MW of 87.3kDa according to NP_002851.2). Recommended concentration: 1-3ug/ml.
POSITIVE CONTROL:	1) Cat. No. 1219 - MCF7 Cell Lysate
SPECIFICITY:	This antibody is expected to recognize both reported isoforms (NP_002851.2; NP_001017423.1).
IMMUNOGEN:	ALDH18A1 antibody was raised against a 10 amino acid synthetic peptide near the C-Terminus of ALDH18A1.
HOST SPECIES:	Goat

Properties

PURIFICATION:	ALDH18A1 antibody was purified from goat serum by ammonium sulphate precipitation followed by antigen affinity chromatography using the immunizing peptide.
PHYSICAL STATE:	Liquid
BUFFER:	ALDH18A1 antibody is supplied in Tris saline, 0.02% sodium azide, pH 7.3 with 0.5% bovine serum albumin.
CONCENTRATION:	500 ug/mL
STORAGE CONDITIONS:	Aliquot and store at -20°C. Minimize freezing and thawing.
CLONALITY:	Polyclonal
CONJUGATE:	Unconjugated

Additional Info

ALTERNATE NAMES:	ALDH18A1, pyrroline-5-carboxylate synthetase (glutamate gamma-semialdehyde synthetase), PYCS, P5CS, MGC117316, GSAS, delta1-pyrroline-5-carboxylate synthetase, aldehyde dehydrogenase 18A1, aldehyde dehydrogenase 18 family, member A1
ACCESSION NO.:	NP_002851.2, NP_001017423.1
PROTEIN GI NO.:	21361368

OFFICIAL SYMBOL:	ALDH18A1
------------------	----------

GENE ID:	5832
----------	------

Background

FOR RESEARCH USE ONLY

December 13, 2016