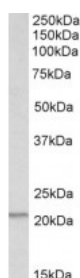


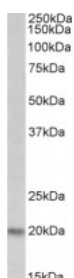


## PSMB9 Antibody

CATALOG NUMBER: 42-661



Western Blot (1ug/ml) staining of Human Thymus lysate (35ug protein in RIPA buffer). Primary incubation was 1 hour. Detected by chemiluminescence.



Western Blot (0.3ug/ml) staining of Rat Thymus lysate (35ug protein in RIPA buffer). Primary incubation was 1 hour. Detected by chemiluminescence.

### Specifications

<b>SPECIES REACTIVITY:</b>	Human, Rat
<b>TESTED APPLICATIONS:</b>	ELISA, WB
<b>APPLICATIONS:</b>	ELISA: antibody detection limit dilution 1:2000. Western Blot: Approx 22kDa band observed in Human Thymus lysates and approx. 20kDa in Rat Thymus (calculated MW of 23.3kDa according to Human NP_002791.1 and Rat NP_036840.2). Recommended concentration: 0.3-1ug/ml.
<b>POSITIVE CONTROL:</b>	1) Cat. No. 1314 - Human Thymus Tissue Lysate
<b>IMMUNOGEN:</b>	PSMB9 antibody was raised against a 10 amino acid synthetic peptide near the internal region of PSMB9.
<b>HOST SPECIES:</b>	Goat

### Properties

<b>PURIFICATION:</b>	PSMB9 antibody was purified from goat serum by ammonium sulphate precipitation followed by antigen affinity chromatography using the immunizing peptide.
<b>PHYSICAL STATE:</b>	Liquid
<b>BUFFER:</b>	PSMB9 antibody is supplied in Tris saline, 0.02% sodium azide, pH 7.3 with 0.5% bovine serum albumin.
<b>CONCENTRATION:</b>	500 ug/mL
<b>STORAGE CONDITIONS:</b>	Aliquot and store at -20°C. Minimize freezing and thawing.
<b>CLONALITY:</b>	Polyclonal
<b>CONJUGATE:</b>	Unconjugated

### Additional Info

<b>ALTERNATE NAMES:</b>	PSMB9, RING12, PSMB6i, proteasome beta 9 subu, proteasome (prosome, macropain) subunit, beta type, 9 (large multifunctional peptidase 2), multicatalytic endopeptidase complex chain 7, MGC70470, macropain chain 7, low molecular mass protein 2, LMP2, beta1i
<b>ACCESSION NO.:</b>	NP_002791.1
<b>PROTEIN GI NO.:</b>	4506205
<b>OFFICIAL SYMBOL:</b>	PSMB9

GENE ID: 5698

Background

FOR RESEARCH USE ONLY

December 13, 2016