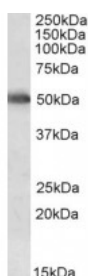


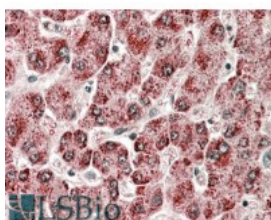


## CYP2E1 Antibody

CATALOG NUMBER: 42-658



Western Blot (0.05ug/ml) staining of Human Liver lysate (35ug protein in RIPA buffer). Primary incubation was 1 hour. Detected by chemiluminescence.



Immunohistochemistry (3.8ug/ml) staining of paraffin embedded Human Liver. Steamed antigen retrieval with citrate buffer pH 6, AP-staining.

### Specifications

<b>SPECIES REACTIVITY:</b>	Human
<b>TESTED APPLICATIONS:</b>	ELISA, IHC-P, WB
<b>APPLICATIONS:</b>	ELISA: antibody detection limit dilution 1:32000. Western Blot: Approx 50kDa band observed in Human Liver lysates (calculated MW of 56.8kDa according to NP_000764.1). Recommended concentration: 0.05-0.2ug/ml. Immunohistochemistry: In paraffin embedded Human Liver shows ER-like staining in hepatocytes. Recommended concentration, 3-5ug/ml.
<b>POSITIVE CONTROL:</b>	1) Cat. No. 1304 - Human Liver Tissue Lysate
<b>IMMUNOGEN:</b>	CYP2E1 antibody was raised against an 11 amino acid synthetic peptide near the internal region of CYP2E1.
<b>HOST SPECIES:</b>	Goat

### Properties

<b>PURIFICATION:</b>	CYP2E1 antibody was purified from goat serum by ammonium sulphate precipitation followed by antigen affinity chromatography using the immunizing peptide.
<b>PHYSICAL STATE:</b>	Liquid
<b>BUFFER:</b>	CYP2E1 antibody is supplied in Tris saline, 0.02% sodium azide, pH 7.3 with 0.5% bovine serum albumin.
<b>CONCENTRATION:</b>	500 ug/mL
<b>STORAGE CONDITIONS:</b>	Aliquot and store at -20°C. Minimize freezing and thawing.
<b>CLONALITY:</b>	Polyclonal
<b>CONJUGATE:</b>	Unconjugated

### Additional Info

<b>ALTERNATE NAMES:</b>	CYP2E1, xenobiotic mo, P450-J, P450C2E, microsomal monooxygenase, flavoprotein-linked monooxygenase, cytochrome P450, subfamily IIE (ethanol-inducible), polypeptide 1, family 2, subfamily E, cytochrome P450 2E1, CYP2E, CPE1
<b>ACCESSION NO.:</b>	NP_000764.1
<b>PROTEIN GI NO.:</b>	10834998

OFFICIAL SYMBOL: CYP2E1

GENE ID: 1571

Background

FOR RESEARCH USE ONLY

December 13, 2016