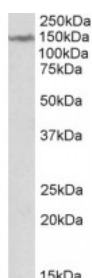




LMTK2 Antibody

CATALOG NUMBER: 42-650



Western Blot (2ug/ml) staining of Human Cerebellum lysate (35ug protein in RIPA buffer). Primary incubation was 1 hour. Detected by chemiluminescence.

Specifications

SPECIES REACTIVITY:	Human
TESTED APPLICATIONS:	ELISA, WB
APPLICATIONS:	ELISA: antibody detection limit dilution 1:1000. Western Blot: Approx 150kDa band observed in Human Brain (Cerebellum) lysates (calculated MW of 165kDa according to NP_055731.2). Recommended concentration: 1-3ug/ml.
POSITIVE CONTROL:	1) Cat. No. 1362 - Human Cerebellum, Left Lysate Cat. No. 1363 - Human Cerebellum, Right Lysate
IMMUNOGEN:	LMTK2 antibody was raised against a 10 amino acid synthetic peptide near the internal region of LMTK2.
HOST SPECIES:	Goat

Properties

PURIFICATION:	LMTK2 antibody was purified from goat serum by ammonium sulphate precipitation followed by antigen affinity chromatography using the immunizing peptide.
PHYSICAL STATE:	Liquid
BUFFER:	LMTK2 antibody is supplied in Tris saline, 0.02% sodium azide, pH 7.3 with 0.5% bovine serum albumin.
CONCENTRATION:	500 ug/mL
STORAGE CONDITIONS:	Aliquot and store at -20°C. Minimize freezing and thawing.
CLONALITY:	Polyclonal
CONJUGATE:	Unconjugated

Additional Info

ALTERNATE NAMES:	LMTK2, LMR2, lemur tyrosine kinase 2, KPI-2, KPI2, kinase phosphatase inhibitor 2, KIAA1079, FLJ46659, cyclin-dependent kinase 5/p35-regulated kinase, cprk, BREK, brain-enriched kinase, apoptosis-associated tyrosine kinase 2, AATYK2
ACCESSION NO.:	NP_055731.2
PROTEIN GI NO.:	38016937

OFFICIAL SYMBOL: LMTK2

GENE ID: 22853

Background

FOR RESEARCH USE ONLY

December 13, 2016