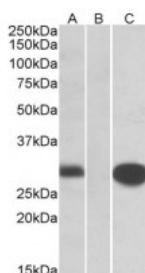




MID1IP1 Antibody

CATALOG NUMBER: 42-644



HEK293 lysate (10ug protein in RIPA buffer) overexpressing Human MID1IP1 with C-terminal MYC tag probed with antibody (1ug/ml) in Lane A and probed with anti-MYC Tag (1/1000) in lane C. Mock-transfected HEK293 probed with antibody (1mg/ml) in Lane B. Prim

Specifications

SPECIES REACTIVITY:	Human
TESTED APPLICATIONS:	ELISA, WB
APPLICATIONS:	ELISA: antibody detection limit dilution 1:8000. Western Blot: In transfected HEK293 transiently expressing full-length Human MID1IP1 (myc and DYKDDDDK tagged), a band of approx. 28kDa was observed. No bands were observed in mock-transfected HEK293 and the same band was observed using anti-myc tag ant
POSITIVE CONTROL:	1) Transfected HEK293
SPECIFICITY:	Reported variants represent identical protein: NP_001092261.1, NP_067065.1, NP_001092260.1
IMMUNOGEN:	MID1IP1 antibody was raised against a 10 amino acid synthetic peptide near the internal region of MID1IP1.
HOST SPECIES:	Goat

Properties

PURIFICATION:	MID1IP1 antibody was purified from goat serum by ammonium sulphate precipitation followed by antigen affinity chromatography using the immunizing peptide.
PHYSICAL STATE:	Liquid
BUFFER:	MID1IP1 antibody is supplied in Tris saline, 0.02% sodium azide, pH 7.3 with 0.5% bovine serum albumin.
CONCENTRATION:	500 ug/mL
STORAGE CONDITIONS:	Aliquot and store at -20°C. Minimize freezing and thawing.
CLONALITY:	Polyclonal
CONJUGATE:	Unconjugated

Additional Info

ALTERNATE NAMES:	MID1IP1, THRSPL, STRAIT11499, MIG12, MID1 interacting protein 1 (gastrulation specific G12-like), MID1 interacting protein 1 (gastrulation specific G12 homolog (zebrafish)), MID1 interacting G12-like protein, G12-like,
-------------------------	--

	FLJ10386
ACCESSION NO.:	NP_067065.1
PROTEIN GI NO.:	10864051
OFFICIAL SYMBOL:	MID1IP1
GENE ID:	58526

Background

FOR RESEARCH USE ONLY

December 13, 2016