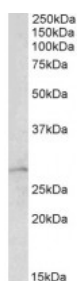




## ARHGDIA Antibody

CATALOG NUMBER: 42-630



Western Blot (1ug/ml) staining of Mouse Lung lysate (35ug protein in RIPA buffer). Primary incubation was 1 hour. Detected by chemiluminescence.

### Specifications

<b>SPECIES REACTIVITY:</b>	Mouse, Rat
<b>TESTED APPLICATIONS:</b>	ELISA, WB
<b>APPLICATIONS:</b>	ELISA: antibody detection limit dilution 1:8000. Western Blot: Approx 28kDa band observed in Mouse and Rat Lung lysates (calculated MW of 23.4kDa according to Mouse NP_598557.3). The observed molecular weight corresponds to earlier findings with different antibodies from other commercial sources. Recom
<b>POSITIVE CONTROL:</b>	1) Cat. No. 1402 - Mouse Lung Tissue Lysate 2) Cat. No. 1462 - Rat Lung Tissue Lysate
<b>IMMUNOGEN:</b>	ARHGDIA antibody was raised against a 10 amino acid synthetic peptide near the internal region of ARHGDIA.
<b>HOST SPECIES:</b>	Goat

### Properties

<b>PURIFICATION:</b>	ARHGDIA antibody was purified from goat serum by ammonium sulphate precipitation followed by antigen affinity chromatography using the immunizing peptide.
<b>PHYSICAL STATE:</b>	Liquid
<b>BUFFER:</b>	ARHGDIA antibody is supplied in Tris saline, 0.02% sodium azide, pH 7.3 with 0.5% bovine serum albumin.
<b>CONCENTRATION:</b>	500 ug/mL
<b>STORAGE CONDITIONS:</b>	Aliquot and store at -20°C. Minimize freezing and thawing.
<b>CLONALITY:</b>	Polyclonal
<b>CONJUGATE:</b>	Unconjugated

### Additional Info

<b>ALTERNATE NAMES:</b>	ARHGDIA, RHOGDI-1, RHOGDI, Rho GDP dissociation inhibitor (GDI) alpha, MGC117248, GDIA1
<b>ACCESSION NO.:</b>	NP_004300.1
<b>PROTEIN GI NO.:</b>	4757768
<b>OFFICIAL SYMBOL:</b>	ARHGDIA

Background

FOR RESEARCH USE ONLY

December 13, 2016