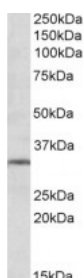


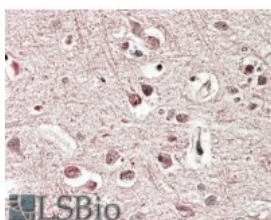


GRM2 Antibody

CATALOG NUMBER: 42-627



Western Blot (1ug/ml) staining of Human Hippocampus lysate (35ug protein in RIPA buffer). Primary incubation was 1 hour. Detected by chemiluminescence.



Immunohistochemistry (3.8ug/ml) staining of paraffin embedded Human Cerebral Cortex. Steamed antigen retrieval with citrate buffer pH 6, AP-staining.

Specifications

SPECIES REACTIVITY:	Human
TESTED APPLICATIONS:	ELISA, IHC-P, WB
APPLICATIONS:	ELISA: antibody detection limit dilution 1:16000. Western Blot: Approx 30kDa band observed in Human Brain (Hippocampus) lysates (calculated MW of 27.5kDa according to NP_001123535.1). Recommended concentration: 1-3ug/ml. Immunohistochemistry: In paraffin embedded Human Cerebral Cortex shows membranous/axonal staining. Recommended concentration, 3-5ug/ml.
POSITIVE CONTROL:	1) Cat. No. XBL-10110 - Human Hippocampus Tissue Lysate
SPECIFICITY:	This antibody is expected to recognize both isoforms (NP_000830.2; NP_001123535.1).
IMMUNOGEN:	GRM2 antibody was raised against a 10 amino acid synthetic peptide near the internal region of GRM2.
HOST SPECIES:	Goat

Properties

PURIFICATION:	GRM2 antibody was purified from goat serum by ammonium sulphate precipitation followed by antigen affinity chromatography using the immunizing peptide.
PHYSICAL STATE:	Liquid
BUFFER:	GRM2 antibody is supplied in Tris saline, 0.02% sodium azide, pH 7.3 with 0.5% bovine serum albumin.
CONCENTRATION:	500 ug/mL
STORAGE CONDITIONS:	Aliquot and store at -20°C. Minimize freezing and thawing.
CLONALITY:	Polyclonal
CONJUGATE:	Unconjugated

Additional Info

ALTERNATE NAMES:	GRM2, MGLUR2, mGlu2, GPRC1B, glutamate receptor, metabotropic 2, glutamate receptor homolog, glutamate metabotropic receptor 2, GLUR2
ACCESSION NO.:	NP_000830.2, NP_001123535.1

PROTEIN GI NO.: 66529100

OFFICIAL SYMBOL: GRM2

GENE ID: 2912

Background

FOR RESEARCH USE ONLY

December 13, 2016