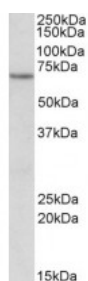




## ETFDH Antibody

CATALOG NUMBER: 42-621



Western Blot (1ug/ml) staining of Human Kidney lysate (35ug protein in RIPA buffer). Primary incubation was 1 hour. Detected by chemiluminescence.

### Specifications

<b>SPECIES REACTIVITY:</b>	Human, Mouse, Rat
<b>TESTED APPLICATIONS:</b>	ELISA, WB
<b>APPLICATIONS:</b>	ELISA: antibody detection limit dilution 1:2000. Western Blot: Approx 70kDa band observed in Human, Mouse and Rat Heart lysates (calculated MW of 68.5kDa according to NP_004444.2). Recommended concentration: 1-3ug/ml.
<b>POSITIVE CONTROL:</b>	1) Cat. No. 1301 - Human Heart Tissue Lysate 2) Cat. No. 1401 - Mouse Heart Tissue Lysate 3) Cat. No. 1461 - Rat Heart Tissue Lysate
<b>IMMUNOGEN:</b>	ETFDH antibody was raised against a 12 amino acid synthetic peptide near the Internal region of ETFDH.
<b>HOST SPECIES:</b>	Goat

### Properties

<b>PURIFICATION:</b>	ETFDH antibody was purified from goat serum by ammonium sulphate precipitation followed by antigen affinity chromatography using the immunizing peptide.
<b>PHYSICAL STATE:</b>	Liquid
<b>BUFFER:</b>	ETFDH antibody is supplied in Tris saline, 0.02% sodium azide, pH 7.3 with 0.5% bovine serum albumin.
<b>CONCENTRATION:</b>	500 ug/mL
<b>STORAGE CONDITIONS:</b>	Aliquot and store at -20°C. Minimize freezing and thawing.
<b>CLONALITY:</b>	Polyclonal
<b>CONJUGATE:</b>	Unconjugated

### Additional Info

<b>ALTERNATE NAMES:</b>	ETFDH, MADD, ETF-ubiqui oxidoreductase, ETFQO, ETF dehydrogenase, electron-transferring-flavoprotein dehydrogenase, electron transfer flavoprotein ubiqui oxidoreductase
<b>ACCESSION NO.:</b>	NP_004444.2

PROTEIN GI NO.: 119703746

OFFICIAL SYMBOL: ETFDH

GENE ID: 2110

## Background

FOR RESEARCH USE ONLY

December 13, 2016