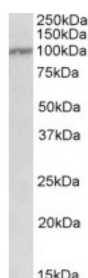




## IL12RB1 Antibody

CATALOG NUMBER: 42-602



Western Blot (0.3ug/ml) staining of Peripheral Blood Lymphocytes lysate (35ug protein in RIPA buffer). Primary incubation was 1 hour. Detected by chemiluminescence.

### Specifications

<b>SPECIES REACTIVITY:</b>	Human
<b>TESTED APPLICATIONS:</b>	ELISA, WB
<b>APPLICATIONS:</b>	ELISA: antibody detection limit dilution 1:8000. Western Blot: Approx 100kDa band observed in Human Peripheral Blood Mononucleocytes lysates (calculated MW of 73.1kDa according to NP_005526.1). The observed molecular weight corresponds to the glycosylated form. Recommended concentration: 0.3-1ug/ml.
<b>POSITIVE CONTROL:</b>	1) Cat. No. 1371 - Human peripheral blood leukocyte (PBL) Lysate
<b>SPECIFICITY:</b>	This antibody is expected to recognize isoform 1 (NP_005526.1) only.
<b>IMMUNOGEN:</b>	IL12RB1 antibody was raised against a 13 amino acid synthetic peptide near the Internal region of IL12RB1.
<b>HOST SPECIES:</b>	Goat

### Properties

<b>PURIFICATION:</b>	IL12RB1 antibody was purified from goat serum by ammonium sulphate precipitation followed by antigen affinity chromatography using the immunizing peptide.
<b>PHYSICAL STATE:</b>	Liquid
<b>BUFFER:</b>	IL12RB1 antibody is supplied in Tris saline, 0.02% sodium azide, pH 7.3 with 0.5% bovine serum albumin.
<b>CONCENTRATION:</b>	500 ug/mL
<b>STORAGE CONDITIONS:</b>	Aliquot and store at -20°C. Minimize freezing and thawing.
<b>CLONALITY:</b>	Polyclonal
<b>CONJUGATE:</b>	Unconjugated

### Additional Info

<b>ALTERNATE NAMES:</b>	IL12RB1, MGC34454, interleukin-12 receptor beta-1 chain, interleukin 12 receptor, beta 1, IL-12R-BETA1, IL12RB, IL-12 receptor beta component, CD212, IL12R
<b>ACCESSION NO.:</b>	NP_005526.1
<b>PROTEIN GI NO.:</b>	5031785

OFFICIAL SYMBOL:	IL12RB1
------------------	---------

GENE ID:	3594
----------	------

## Background

FOR RESEARCH USE ONLY

December 13, 2016