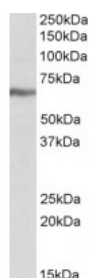




IGF2BP1 Antibody

CATALOG NUMBER: 42-596



Western Blot (0.3ug/ml) staining of K562 lysate (35ug protein in RIPA buffer). Primary incubation was 1 hour. Detected by chemiluminescence.

Specifications

SPECIES REACTIVITY:	Human
TESTED APPLICATIONS:	ELISA, WB
APPLICATIONS:	ELISA: antibody detection limit dilution 1:16000. Western Blot: Approx 65kDa band observed in lysates of cell line K562 (calculated MW of 63.5kDa according to NP_006537.3;). Recommended concentration: 0.3-1ug/ml.
POSITIVE CONTROL:	1) Cat. No. 1204 - K562 Cell Lysate
SPECIFICITY:	This antibody is expected to recognize both reported isoforms (NP_006537.3; NP_001153895.1).
IMMUNOGEN:	IGF2BP1 antibody was raised against a 14 amino acid synthetic peptide near the Internal region of IGF2BP1.
HOST SPECIES:	Goat

Properties

PURIFICATION:	IGF2BP1 antibody was purified from goat serum by ammonium sulphate precipitation followed by antigen affinity chromatography using the immunizing peptide.
PHYSICAL STATE:	Liquid
BUFFER:	IGF2BP1 antibody is supplied in Tris saline, 0.02% sodium azide, pH 7.3 with 0.5% bovine serum albumin.
CONCENTRATION:	500 ug/mL
STORAGE CONDITIONS:	Aliquot and store at -20°C. Minimize freezing and thawing.
CLONALITY:	Polyclonal
CONJUGATE:	Unconjugated

Additional Info

ALTERNATE NAMES:	IGF2BP1, zipcode-binding protein 1, ZBP1, VICKZ1, VICKZ family member 1, insulin-like growth factor 2 mRNA binding protein 1, IMP-1, IMP1, IGF2 mRNA-binding protein 1, IGF II mRNA binding protein 1, CRD-BP, CRDBP, coding region determinant-binding protein
ACCESSION NO.:	NP_006537.3, NP_001153895.1
PROTEIN GI NO.:	56237027

OFFICIAL SYMBOL: IGF2BP1

GENE ID: 10642

Background

FOR RESEARCH USE ONLY

December 13, 2016