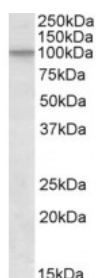




CUL2 Antibody

CATALOG NUMBER: 42-593



Western Blot (1ug/ml) staining of NIH3T3 lysate (35ug protein in RIPA buffer). Primary incubation was 1 hour. Detected by chemiluminescence.

Specifications

SPECIES REACTIVITY:	Mouse
TESTED APPLICATIONS:	ELISA, WB
APPLICATIONS:	ELISA: antibody detection limit dilution 1:8000. Western Blot: Approx 100kDa band observed in lysates of cell line NIH3T3 (calculated MW of 87.0kDa according to Human NP_003582.2 and of 86.9kDa according to Mouse NP_083678.2). Recommended concentration: 1-3ug/ml.
POSITIVE CONTROL:	1) Cat. No. 1282 - 3T3 (NIH) Cell Lysate
IMMUNOGEN:	CUL2 antibody was raised against a 12 amino acid synthetic peptide near the C-Terminus of CUL2.
HOST SPECIES:	Goat

Properties

PURIFICATION:	CUL2 antibody was purified from goat serum by ammonium sulphate precipitation followed by antigen affinity chromatography using the immunizing peptide.
PHYSICAL STATE:	Liquid
BUFFER:	CUL2 antibody is supplied in Tris saline, 0.02% sodium azide, pH 7.3 with 0.5% bovine serum albumin.
CONCENTRATION:	500 ug/mL
STORAGE CONDITIONS:	Aliquot and store at -20°C. Minimize freezing and thawing.
CLONALITY:	Polyclonal
CONJUGATE:	Unconjugated

Additional Info

ALTERNATE NAMES:	CUL2, OTTHUMP00000019437, MGC131970, cullin 2,
ACCESSION NO.:	NP_003582.2
PROTEIN GI NO.:	19482174
OFFICIAL SYMBOL:	CUL2
GENE ID:	8453

