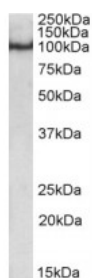




POU2F1 Antibody

CATALOG NUMBER: 42-575



Western Blot (0.5ug/ml) staining of nuclear HeLa lysate (35ug protein in RIPA buffer). Primary incubation was 1 hour. Detected by chemiluminescence.

Specifications

SPECIES REACTIVITY:	Human
TESTED APPLICATIONS:	ELISA, WB
APPLICATIONS:	ELISA: antibody detection limit dilution 1:4000. Western Blot: Approx 100kDa band observed in nuclear lysates of cell line HeLa (calculated MW of 76.5kDa according to NP_002688.2). The observed molecular weight corresponds to earlier findings with different antibodies from other commercial sources. Rec
POSITIVE CONTROL:	1) HeLa Nuclear Lysate
IMMUNOGEN:	POU2F1 antibody was raised against a 15 amino acid synthetic peptide near the internal region (near N-Terminus) of POU2F1 (near N-Terminus).
HOST SPECIES:	Goat

Properties

PURIFICATION:	POU2F1 antibody was purified from goat serum by ammonium sulphate precipitation followed by antigen affinity chromatography using the immunizing peptide.
PHYSICAL STATE:	Liquid
BUFFER:	POU2F1 antibody is supplied in Tris saline, 0.02% sodium azide, pH 7.3 with 0.5% bovine serum albumin.
CONCENTRATION:	500 ug/mL
STORAGE CONDITIONS:	Aliquot and store at -20°C. Minimize freezing and thawing.
CLONALITY:	Polyclonal
CONJUGATE:	Unconjugated

Additional Info

ALTERNATE NAMES:	POU2F1, POU domain, class 2, transcription factor 1, POU class 2 homeobox 1, OTTHUMP00000032348, OTF1, Octamer-binding transcription factor-1, OCT1
ACCESSION NO.:	NP_002688.2
PROTEIN GI NO.:	42476164
OFFICIAL SYMBOL:	POU2F1

GENE ID: 5451

Background

FOR RESEARCH USE ONLY

December 13, 2016