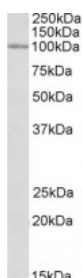




CLCN2 Antibody

CATALOG NUMBER: 42-568



Western Blot (0.3ug/ml) staining of HeLa lysate (35ug protein in RIPA buffer).
Primary incubation was 1 hour. Detected by chemiluminescence.

Specifications

SPECIES REACTIVITY:	Human
TESTED APPLICATIONS:	ELISA, WB
APPLICATIONS:	ELISA: antibody detection limit dilution 1:64000. Western Blot: Approx 100kDa band observed in lysates of cell line HeLa (calculated MW of 98.5kDa according to NP_004357.3). Recommended concentration: 0.3-1ug/ml.
POSITIVE CONTROL:	1) Cat. No. 1201 - HeLa Cell Lysate
SPECIFICITY:	This antibody is expected to recognize all reported isoforms (NP_004357.3; NP_001164558.1; NP_001164559.1; NP_001164560.1).
IMMUNOGEN:	CLCN2 antibody was raised against a 13 amino acid synthetic peptide near the internal region of CLCN2.
HOST SPECIES:	Goat

Properties

PURIFICATION:	CLCN2 antibody was purified from goat serum by ammonium sulphate precipitation followed by antigen affinity chromatography using the immunizing peptide.
PHYSICAL STATE:	Liquid
BUFFER:	CLCN2 antibody is supplied in Tris saline, 0.02% sodium azide, pH 7.3 with 0.5% bovine serum albumin.
CONCENTRATION:	500 ug/mL
STORAGE CONDITIONS:	Aliquot and store at -20°C. Minimize freezing and thawing.
CLONALITY:	Polyclonal
CONJUGATE:	Unconjugated

Additional Info

ALTERNATE NAMES:	CLCN2, Epilepsy, idiopathic generalized, susceptibility to, EJM8, EJM6, EGMA, EGI3, EGI11, ECA3, ECA2, CLC2, CIC-2, chloride channel 2, LKPAT, cIC-2
ACCESSION NO.:	NP_004357.3
PROTEIN GI NO.:	156104869

OFFICIAL SYMBOL: CLCN2

GENE ID: 1181

Background

FOR RESEARCH USE ONLY

December 13, 2016