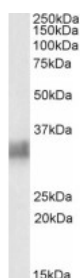




BST2 Antibody

CATALOG NUMBER: 42-551



Western Blot (0.3ug/ml) staining of Human Spleen lysate (35ug protein in RIPA buffer). Primary incubation was 1 hour. Detected by chemiluminescence.

Specifications

SPECIES REACTIVITY:	Human
TESTED APPLICATIONS:	ELISA, WB
APPLICATIONS:	ELISA: antibody detection limit dilution 1:32000. Western Blot: Approx 30kDa band observed in Human Spleen and Testis lysates (calculated MW of 19.8kDa according to NP_004326.1). The observed molecular weight corresponds to earlier findings in literature with different antibodies (Rollason, J Cell Sci).
POSITIVE CONTROL:	1) Cat. No. 1306 - Human Spleen Tissue Lysate 2) Cat. No. 1313 - Human Testis Tissue Lysate
IMMUNOGEN:	BST2 antibody was raised against an 11 amino acid synthetic peptide near the internal region of BST2.
HOST SPECIES:	Goat

Properties

PURIFICATION:	BST2 antibody was purified from goat serum by ammonium sulphate precipitation followed by antigen affinity chromatography using the immunizing peptide.
PHYSICAL STATE:	Liquid
BUFFER:	BST2 antibody is supplied in Tris saline, 0.02% sodium azide, pH 7.3 with 0.5% bovine serum albumin.
CONCENTRATION:	500 ug/mL
STORAGE CONDITIONS:	Aliquot and store at -20°C. Minimize freezing and thawing.
CLONALITY:	Polyclonal
CONJUGATE:	Unconjugated

Additional Info

ALTERNATE NAMES:	BST2, tetherin, CD317, bone marrow stromal cell antigen 2, TETHERIN
ACCESSION NO.:	NP_004326.1
PROTEIN GI NO.:	4757876
OFFICIAL SYMBOL:	BST2

Background

FOR RESEARCH USE ONLY

December 13, 2016