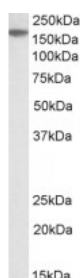




MECOM Antibody

CATALOG NUMBER: 42-544



Western Blot (2ug/ml) staining of A549 lysate (35ug protein in RIPA buffer). Primary incubation was 1 hour. Detected by chemiluminescence.

Specifications

SPECIES REACTIVITY:	Human
TESTED APPLICATIONS:	ELISA, WB
APPLICATIONS:	ELISA: antibody detection limit dilution 1:16000. Western Blot: Approx 170kDa band observed in lysates of cell lines A549 and HepG2 (calculated MW of 126kDa according to NP_001098547.3). The observed molecular weight corresponds to earlier findings with different antibodies from other commercial sources
POSITIVE CONTROL:	1) Cat. No. 1203 - A549 Cell Lysate 2) Cat. No. 1211 - HepG2 Cell Lysate
SPECIFICITY:	This antibody is expected to recognize all reported isoforms (NP_001098547.3; NP_005232.2; NP_004982.2; NP_001157471.1; NP_001157472.1). Reported variants represent identical protein: NP_001098548.2, NP_005232.2
IMMUNOGEN:	MECOM antibody was raised against a 10 amino acid synthetic peptide near the internal region of MECOM.
HOST SPECIES:	Goat

Properties

PURIFICATION:	MECOM antibody was purified from goat serum by ammonium sulphate precipitation followed by antigen affinity chromatography using the immunizing peptide.
PHYSICAL STATE:	Liquid
BUFFER:	MECOM antibody is supplied in Tris saline, 0.02% sodium azide, pH 7.3 with 0.5% bovine serum albumin.
CONCENTRATION:	500 ug/mL
STORAGE CONDITIONS:	Aliquot and store at -20°C. Minimize freezing and thawing.
CLONALITY:	Polyclonal
CONJUGATE:	Unconjugated

Additional Info

ALTERNATE NAMES:	MECOM, PRDM3, oncogene EVI1, myelodysplasia syndrome-associated protein 1, myelodysplasia syndrome 1, MGC97004, MGC163392, MDS1-EVI1, MDS1 and EVI1 complex locus, MDS1, EVI1, ecotropic viral
-------------------------	--

integration site 1, AML1-EVI-1 fusion protein, AML1-EVI-1

ACCESSION NO.:	NP_001098547.3, NP_005232.2, NP_004982.2, NP_001157471.1, NP_001157472.1
PROTEIN GI NO.:	255683379
OFFICIAL SYMBOL:	MECOM
GENE ID:	2122

Background

FOR RESEARCH USE ONLY

December 13, 2016