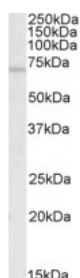




REL Antibody

CATALOG NUMBER: 42-533



Western Blot (0.5ug/ml) staining of Human Spleen lysate (35ug protein in RIPA buffer). Primary incubation was 1 hour. Detected by chemiluminescence.

Specifications

SPECIES REACTIVITY:	Human
TESTED APPLICATIONS:	ELISA, WB
APPLICATIONS:	ELISA: antibody detection limit dilution 1:16000. Western Blot: Approx 70kDa band observed in Human Spleen and Human Peripheral Blood Mononucleocytes lysates (calculated MW of 68.5kDa according to NP_002899.1). Recommended concentration: 0.5-2ug/ml.
POSITIVE CONTROL:	1) Cat. No. 1306 - Human Spleen Tissue Lysate 2) Cat. No. 1371 - Human peripheral blood leukocyte (PBL) Lysate
IMMUNOGEN:	REL antibody was raised against a 12 amino acid synthetic peptide near the internal region of REL.
HOST SPECIES:	Goat

Properties

PURIFICATION:	REL antibody was purified from goat serum by ammonium sulphate precipitation followed by antigen affinity chromatography using the immunizing peptide.
PHYSICAL STATE:	Liquid
BUFFER:	REL antibody is supplied in Tris saline, 0.02% sodium azide, pH 7.3 with 0.5% bovine serum albumin.
CONCENTRATION:	500 ug/mL
STORAGE CONDITIONS:	Aliquot and store at -20°C. Minimize freezing and thawing.
CLONALITY:	Polyclonal
CONJUGATE:	Unconjugated

Additional Info

ALTERNATE NAMES:	REL, v-rel reticuloendotheliosis viral oncogene homolog (avian), v-rel reticuloendotheliosis viral oncogene homolog, v-rel avian reticuloendotheliosis viral oncogene homolog, oncogene REL, avian reticuloendotheliosis, C-Rel proto-oncogene protein, C-Rel
ACCESSION NO.:	NP_002899.1
PROTEIN GI NO.:	4506473

OFFICIAL SYMBOL:	REL
GENE ID:	5966

Background

FOR RESEARCH USE ONLY

December 13, 2016