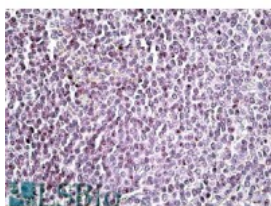




## AIM2 Antibody

CATALOG NUMBER: 42-531

110kDa  
75KDa  
50kDa



Western Blot (1ug/ml) staining of IFNbeta-treated WI-38 lysate (35ug protein in RIPA buffer). Primary incubation was 1 hour. Detected by chemiluminescence.

Immunohistochemistry (3.8ug/ml) staining of paraffin embedded Human Spleen. Steamed antigen retrieval with citrate buffer pH 6, AP-staining.

### Specifications

<b>SPECIES REACTIVITY:</b>	Human
<b>TESTED APPLICATIONS:</b>	ELISA, IHC-P, WB
<b>APPLICATIONS:</b>	ELISA: antibody detection limit dilution 1:8000. Western Blot: Approx 50+55kDa bands observed in lysates of Human WI-38 fibroblast after treatment with interferon beta (calculated MW of 39.0kDa according to NP_004824.1). The observed molecular weight corresponds to earlier findings in literature with Immunohistochemistry: In paraffin embedded Human Spleen shows nucleolar staining in some splenocytes. Recommended concentration, 4-6ug/ml.
<b>IMMUNOGEN:</b>	AIM2 antibody was raised against a 15 amino acid synthetic peptide near the C-Terminus of AIM2.
<b>HOST SPECIES:</b>	Goat

### Properties

<b>PURIFICATION:</b>	AIM2 antibody was purified from goat serum by ammonium sulphate precipitation followed by antigen affinity chromatography using the immunizing peptide.
<b>PHYSICAL STATE:</b>	Liquid
<b>BUFFER:</b>	AIM2 antibody is supplied in Tris saline, 0.02% sodium azide, pH 7.3 with 0.5% bovine serum albumin.
<b>CONCENTRATION:</b>	500 ug/mL
<b>STORAGE CONDITIONS:</b>	Aliquot and store at -20°C. Minimize freezing and thawing.
<b>CLONALITY:</b>	Polyclonal
<b>CONJUGATE:</b>	Unconjugated

### Additional Info

<b>ALTERNATE NAMES:</b>	AIM2, PYHIN4, absent in melanoma 2
<b>ACCESSION NO.:</b>	NP_004824.1
<b>PROTEIN GI NO.:</b>	4757734
<b>OFFICIAL SYMBOL:</b>	AIM2
<b>GENE ID:</b>	9447

