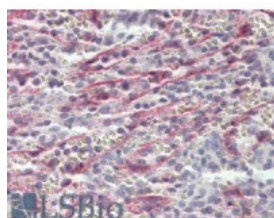




STAB1 Antibody

CATALOG NUMBER: 42-528



Immunohistochemistry (3.8ug/ml) staining
of paraffin embedded Human Spleen.
Steamed antigen retrieval with citrate
buffer pH 6, AP-staining.

Specifications

SPECIES REACTIVITY:	Human
TESTED APPLICATIONS:	ELISA, IHC-P
APPLICATIONS:	ELISA: antibody detection limit dilution 1:8000. Immunohistochemistry: In paraffin embedded Human Spleen shows endothelial staining. Recommended concentration, 3-5ug/ml.
IMMUNOGEN:	STAB1 antibody was raised against a 12 amino acid synthetic peptide near the C-Terminus of STAB1.
HOST SPECIES:	Goat

Properties

PURIFICATION:	STAB1 antibody was purified from goat serum by ammonium sulphate precipitation followed by antigen affinity chromatography using the immunizing peptide.
PHYSICAL STATE:	Liquid
BUFFER:	STAB1 antibody is supplied in Tris saline, 0.02% sodium azide, pH 7.3 with 0.5% bovine serum albumin.
CONCENTRATION:	500 ug/mL
STORAGE CONDITIONS:	Aliquot and store at -20°C. Minimize freezing and thawing.
CLONALITY:	Polyclonal
CONJUGATE:	Unconjugated

Additional Info

ALTERNATE NAMES:	STAB1, stabilin 1, STAB-1, MS-1 antigen, KIAA0246, FEX1, FELE-1, FEEL-1, fasciclin egf-like, laminin-type egf-like, and link domain-containing scavenger receptor-1, common lymphatic endothelial and vascular endothelial receptor-1, CLEVER-1, FEEL1
ACCESSION NO.:	NP_055951.2
PROTEIN GI NO.:	61743978
OFFICIAL SYMBOL:	STAB1
GENE ID:	23166

