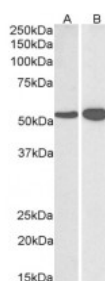
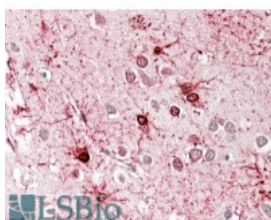


## GLUD1 / GLUD2 Antibody

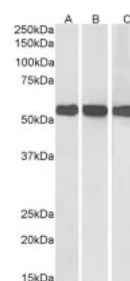
CATALOG NUMBER: 42-524



Western Blot (0.03ug/ml) staining of Human (A) and Mouse (B) Brain lysate (35ug protein in RIPA buffer). Primary incubation was 1 hour. Detected by chemiluminescence.



Immunohistochemistry (3.8ug/ml) staining of paraffin embedded Human Cerebral Cortex. Steamed antigen retrieval with citrate buffer pH 6, AP-staining.



Western Blot (0.01ug/ml) staining of Human (A), Mouse (B) and Rat (C) Liver lysate (35ug protein in RIPA buffer). Primary incubation was 1 hour. Detected by chemiluminescence.

### Specifications

<b>SPECIES REACTIVITY:</b>	Human, Mouse, Rat
<b>TESTED APPLICATIONS:</b>	ELISA, IF, IHC-P, WB
<b>APPLICATIONS:</b>	ELISA: antibody detection limit dilution 1:32000. Western Blot: Approx 55kDa band observed in Human Brain (Cerebellum) and Mouse Brain lysates and in Human, Mouse and Rat Liver lysates (calculated MW of 61.4kDa according to Human NP_005262.1, of 61.3kDa according to Mouse NP_032159.1 and of 61.4kDa according to Rat NP_036216.2). Immunohistochemistry: In paraffin embedded Human Cerebral Cortex shows mitochondrial staining in neuronal cell bodies and axons. Recommended concentration, 3-5ug/ml. Immunofluorescence: Customer found particulate cytoplasm staining in HeLa
<b>POSITIVE CONTROL:</b>	1) Cat. No. 1304 - Human Liver Tissue Lysate 2) Cat. No. 1404 - Mouse Liver Tissue Lysate
<b>SPECIFICITY:</b>	This antibody is expected to recognize both reported isoforms (NP_005262.1; NP_036216.2).
<b>IMMUNOGEN:</b>	GLUD1 / GLUD2 antibody was raised against a 15 amino acid synthetic peptide near the internal region of GLUD1 / GLUD2.
<b>HOST SPECIES:</b>	Goat

### Properties

<b>PURIFICATION:</b>	GLUD1 / GLUD2 antibody was purified from goat serum by ammonium sulphate precipitation followed by antigen affinity chromatography using the immunizing peptide.
<b>PHYSICAL STATE:</b>	Liquid
<b>BUFFER:</b>	GLUD1 / GLUD2 antibody is supplied in Tris saline, 0.02% sodium azide, pH 7.3 with 0.5% bovine serum albumin.
<b>CONCENTRATION:</b>	500 ug/mL
<b>STORAGE CONDITIONS:</b>	Aliquot and store at -20°C. Minimize freezing and thawing.
<b>CLONALITY:</b>	Polyclonal
<b>CONJUGATE:</b>	Unconjugated

#### Additional Info

ALTERNATE NAMES:	GLUD1, MGC132003, glutamate dehydrogenase 1, GLUD, GDH1, GDH
ACCESSION NO.:	NP_005262.1, NP_036216.2
PROTEIN GI NO.:	4885281
OFFICIAL SYMBOL:	GLUD1 / GLUD2
GENE ID:	2746; 2747

#### Background

FOR RESEARCH USE ONLY

December 13, 2016