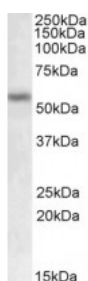




MMP12 Antibody

CATALOG NUMBER: 42-519



Western Blot (0.5ug/ml) staining of Human Breast Cancer lysate (35ug protein in RIPA buffer). Primary incubation was 1 hour. Detected by chemiluminescence.

Specifications

SPECIES REACTIVITY:	Human
TESTED APPLICATIONS:	ELISA, WB
APPLICATIONS:	ELISA: antibody detection limit dilution 1:4000. Western Blot: Approx 55kDa band observed in Human Breast Cancer lysates (calculated MW of 54.0kDa according to NP_002417.2). Recommended concentration: 0.3-1ug/ml.
POSITIVE CONTROL:	1) Cat. No. 1323 - Human Breast Tumor Tissue Lysate
IMMUNOGEN:	MMP12 antibody was raised against an 11 amino acid synthetic peptide near the internal region of MMP12.
HOST SPECIES:	Goat

Properties

PURIFICATION:	MMP12 antibody was purified from goat serum by ammonium sulphate precipitation followed by antigen affinity chromatography using the immunizing peptide.
PHYSICAL STATE:	Liquid
BUFFER:	MMP12 antibody is supplied in Tris saline, 0.02% sodium azide, pH 7.3 with 0.5% bovine serum albumin.
CONCENTRATION:	500 ug/mL
STORAGE CONDITIONS:	Aliquot and store at -20°C. Minimize freezing and thawing.
CLONALITY:	Polyclonal
CONJUGATE:	Unconjugated

Additional Info

ALTERNATE NAMES:	MMP12, MME, MGC138506, matrix metalloproteinase 12 (macrophage elastase), matrix metalloproteinase 12, matrix metalloproteinase 12 (macrophage elastase), macrophage metalloelastase, macrophage elastase, HME
ACCESSION NO.:	NP_002417.2
PROTEIN GI NO.:	73858572
OFFICIAL SYMBOL:	MMP12

Background

FOR RESEARCH USE ONLY

December 13, 2016