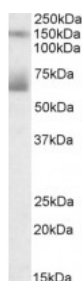




MSLN Antibody

CATALOG NUMBER: 42-503



Western Blot (0.3ug/ml) staining of Human Placenta lysate (35ug protein in RIPA buffer). Primary incubation was 1 hour. Detected by chemiluminescence.

Specifications

SPECIES REACTIVITY:	Human
TESTED APPLICATIONS:	ELISA, WB
APPLICATIONS:	ELISA: antibody detection limit dilution 1:64000. Western Blot: Approx 70kDa band observed in Human Placenta lysates (calculated MW of 68.1kDa according to NP_005814.2 and of 69.0kDa according to NP_037536.2). Recommended concentration: 0.3-1ug/ml. An additional band of unknown identity was also consist
POSITIVE CONTROL:	1) Cat. No. 1309 - Human Placenta Lysate
SPECIFICITY:	This antibody is expected to recognize isoform 1 and 2 (NP_005814.2; NP_037536.2).
IMMUNOGEN:	MSLN antibody was raised against a 13 amino acid synthetic peptide near the internal region of MSLN.
HOST SPECIES:	Goat

Properties

PURIFICATION:	MSLN antibody was purified from goat serum by ammonium sulphate precipitation followed by antigen affinity chromatography using the immunizing peptide.
PHYSICAL STATE:	Liquid
BUFFER:	MSLN antibody is supplied in Tris saline, 0.02% sodium azide, pH 7.3 with 0.5% bovine serum albumin.
CONCENTRATION:	500 ug/mL
STORAGE CONDITIONS:	Aliquot and store at -20°C. Minimize freezing and thawing.
CLONALITY:	Polyclonal
CONJUGATE:	Unconjugated

Additional Info

ALTERNATE NAMES:	MSLN, SMR, MPF, mesothelin, megakaryocyte potentiating factor, CAK1
ACCESSION NO.:	NP_005814.2, NP_037536.2
PROTEIN GI NO.:	53988378
OFFICIAL SYMBOL:	MSLN

Background

FOR RESEARCH USE ONLY

December 13, 2016