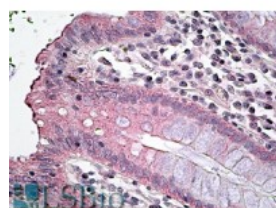




SLC12A2 Antibody

CATALOG NUMBER: 42-498



Immunohistochemistry (3.8ug/ml) staining
of paraffin embedded Human Colon.
Steamed antigen retrieval with citrate
buffer pH 6, AP-staining.

Specifications

SPECIES REACTIVITY:	Human
TESTED APPLICATIONS:	ELISA, IHC-P
APPLICATIONS:	ELISA: antibody detection limit dilution 1:64000. Western Blot: Preliminary experiments gave an approx 75kDa band in Human, Mouse and Rat Skeletal Muscle, Heart and Brain lysates after 1ug/ml antibody staining. Please note that currently we cannot find an explanation in the literature for the band we ob Immunohistochemistry: In paraffin embedded Human Colon shows membranous staining. Recommended concentration, 4-6ug/ml.
IMMUNOGEN:	SLC12A2 antibody was raised against a 15 amino acid synthetic peptide near the internal region of SLC12A2.
HOST SPECIES:	Goat

Properties

PURIFICATION:	SLC12A2 antibody was purified from goat serum by ammonium sulphate precipitation followed by antigen affinity chromatography using the immunizing peptide.
PHYSICAL STATE:	Liquid
BUFFER:	SLC12A2 antibody is supplied in Tris saline, 0.02% sodium azide, pH 7.3 with 0.5% bovine serum albumin.
CONCENTRATION:	500 ug/mL
STORAGE CONDITIONS:	Aliquot and store at -20°C. Minimize freezing and thawing.
CLONALITY:	Polyclonal
CONJUGATE:	Unconjugated

Additional Info

ALTERNATE NAMES:	SLC12A2, solute carrier family 12 (sodium/potassium/chloride transporters), member 2, NKCC1, MGC104233, bumetanide-sensitive sodium-(potassium)-chloride cotransporter 1, BSC2, BSC, basolateral Na-K-Cl symporter
ACCESSION NO.:	NP_001037.1
PROTEIN GI NO.:	4506975
OFFICIAL SYMBOL:	SLC12A2
GENE ID:	6558

