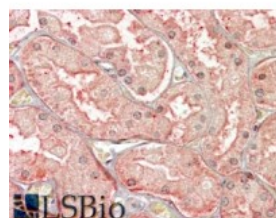




## SFRP1 Antibody

CATALOG NUMBER: 42-478



Immunohistochemistry (3.8ug/ml) staining  
of paraffin embedded Human Kidney.  
Steamed antigen retrieval with citrate  
buffer pH 6, AP-staining.

### Specifications

<b>SPECIES REACTIVITY:</b>	Human
<b>TESTED APPLICATIONS:</b>	ELISA, IHC-P
<b>APPLICATIONS:</b>	ELISA: antibody detection limit dilution 1:1000. Immunohistochemistry: In paraffin embedded Human Kidney shows vesicular staining in epithelial cells of PCT. Recommended concentration, 3-6ug/ml.
<b>POSITIVE CONTROL:</b>	1) Cat. No. 10-401 - Human Kidney Tissue Slide
<b>IMMUNOGEN:</b>	SFRP1 antibody was raised against a 13 amino acid synthetic peptide near the C-Terminus of SFRP1.
<b>HOST SPECIES:</b>	Goat

### Properties

<b>PURIFICATION:</b>	SFRP1 antibody was purified from goat serum by ammonium sulphate precipitation followed by antigen affinity chromatography using the immunizing peptide.
<b>PHYSICAL STATE:</b>	Liquid
<b>BUFFER:</b>	SFRP1 antibody is supplied in Tris saline, 0.02% sodium azide, pH 7.3 with 0.5% bovine serum albumin.
<b>CONCENTRATION:</b>	500 ug/mL
<b>STORAGE CONDITIONS:</b>	Aliquot and store at -20°C. Minimize freezing and thawing.
<b>CLONALITY:</b>	Polyclonal
<b>CONJUGATE:</b>	Unconjugated

### Additional Info

<b>ALTERNATE NAMES:</b>	secreted apoptosis-related protein 2, SARP2, FrzA, FRP1, FRP-1, FRP, secreted frizzled-related protein 1, SFRP1
<b>ACCESSION NO.:</b>	NP_003003.3
<b>PROTEIN GI NO.:</b>	56117838
<b>OFFICIAL SYMBOL:</b>	SFRP1
<b>GENE ID:</b>	6422

