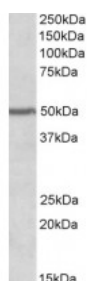




PAX1 Antibody

CATALOG NUMBER: 42-442



Western Blot (0.2ug/ml) staining of Human Cerebellum lysate (35ug protein in RIPA buffer). Primary incubation was 1 hour. Detected by chemiluminescence.

Specifications

SPECIES REACTIVITY:	Human
TESTED APPLICATIONS:	ELISA, WB
APPLICATIONS:	ELISA: antibody detection limit dilution 1:32000. Western Blot: Approx 50kDa band observed in Human Brain (Cerebellum) lysates (calculated MW of 55.5kDa according to NP_006183.2). Recommended concentration: 0.2-0.6ug/ml.
POSITIVE CONTROL:	1) Cat. No. 1362 - Human Cerebellum, Left Lysate Cat. No. 1363 - Human Cerebellum, Right Lysate
IMMUNOGEN:	PAX1 antibody was raised against a 12 amino acid synthetic peptide near the internal region of PAX1 (aa 318-329).
HOST SPECIES:	Goat

Properties

PURIFICATION:	PAX1 antibody was purified from goat serum by ammonium sulphate precipitation followed by antigen affinity chromatography using the immunizing peptide.
PHYSICAL STATE:	Liquid
BUFFER:	PAX1 antibody is supplied in Tris saline, 0.02% sodium azide, pH 7.3 with 0.5% bovine serum albumin.
CONCENTRATION:	500 ug/mL
STORAGE CONDITIONS:	Aliquot and store at -20°C. Minimize freezing and thawing.
CLONALITY:	Polyclonal
CONJUGATE:	Unconjugated

Additional Info

ALTERNATE NAMES:	paired domain gene HuP48, paired box gene 1, HUP48, paired box 1, PAX1
ACCESSION NO.:	NP_006183.2
PROTEIN GI NO.:	197276661
OFFICIAL SYMBOL:	PAX1

GENE ID: 5075

Background

FOR RESEARCH USE ONLY

December 13, 2016