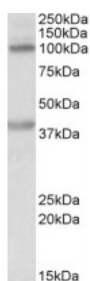




ZEB2 Antibody

CATALOG NUMBER: 42-432



Western Blot (0.2ug/ml) staining of Human Liver lysate (35ug protein in RIPA buffer). Primary incubation was 1 hour. Detected by chemiluminescence.

Specifications

SPECIES REACTIVITY:	Human
TESTED APPLICATIONS:	ELISA, WB
APPLICATIONS:	ELISA: antibody detection limit dilution 1:32000. Western Blot: Approx 100+38kDa bands observed in Human Liver lysates (calculated MW of 136kDa according to NP_055610.1). Recommended concentration: 0.2-0.5ug/ml. We believe the two observed bands represent two breakdown fragments.
POSITIVE CONTROL:	1) Cat. No. 1304 - Human Liver Tissue Lysate
SPECIFICITY:	This antibody is expected to recognize both reported isoforms (NP_055610.1; NP_001165124.1).
IMMUNOGEN:	ZEB2 antibody was raised against a 14 amino acid synthetic peptide near the internal region of ZEB2 (aa 545-558).
HOST SPECIES:	Goat

Properties

PURIFICATION:	ZEB2 antibody was purified from goat serum by ammonium sulphate precipitation followed by antigen affinity chromatography using the immunizing peptide.
PHYSICAL STATE:	Liquid
BUFFER:	ZEB2 antibody is supplied in Tris saline, 0.02% sodium azide, pH 7.3 with 0.5% bovine serum albumin.
CONCENTRATION:	500 ug/mL
STORAGE CONDITIONS:	Aliquot and store at -20°C. Minimize freezing and thawing.
CLONALITY:	Polyclonal
CONJUGATE:	Unconjugated

Additional Info

ALTERNATE NAMES:	zinc finger homeobox protein 1, zinc finger homeobox 1b, zinc finger E-box-binding homeobox 2, Smad-interacting protein 1, OTTHUMP00000204540, ZFX1B, SMADIP1, SIP1, SIP-1, KIAA0569, FLJ42816, zinc finger E-box binding homeobox 2, ZEB2, ZFX1B, HRIHFB2411
ACCESSION NO.:	NP_055610.1, NP_001165124.1

PROTEIN GI NO.: 7662184

OFFICIAL SYMBOL: ZEB2

GENE ID: 9839

Background

FOR RESEARCH USE ONLY

December 13, 2016