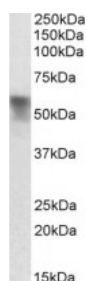




## Serpina6 Antibody

CATALOG NUMBER: 42-429



Western Blot (0.03ug/ml) staining of Rat Liver lysate (35ug protein in RIPA buffer). Primary incubation was 1 hour. Detected by chemiluminescence.

### Specifications

<b>SPECIES REACTIVITY:</b>	Rat
<b>TESTED APPLICATIONS:</b>	ELISA, WB
<b>APPLICATIONS:</b>	ELISA: antibody detection limit dilution 1:16000. Western Blot: Approx 55kDa band observed in Rat Liver lysates (calculated MW of 44.7kDa according to NP_001009663.1). The observed molecular weight corresponds to earlier findings in literature with different antibodies (Richard et al, Endocrinology. 201
<b>POSITIVE CONTROL:</b>	1) Cat. No. 1464 - Rat Liver Tissue Lysate
<b>IMMUNOGEN:</b>	Serpina6 antibody was raised against a 14 amino acid synthetic peptide near the internal region of Serpina6 (rat).
<b>HOST SPECIES:</b>	Goat

### Properties

<b>PURIFICATION:</b>	Serpina6 antibody was purified from goat serum by ammonium sulphate precipitation followed by antigen affinity chromatography using the immunizing peptide.
<b>PHYSICAL STATE:</b>	Liquid
<b>BUFFER:</b>	Serpina6 antibody is supplied in Tris saline, 0.02% sodium azide, pH 7.3 with 0.5% bovine serum albumin.
<b>CONCENTRATION:</b>	500 ug/mL
<b>STORAGE CONDITIONS:</b>	Aliquot and store at -20°C. Minimize freezing and thawing.
<b>CLONALITY:</b>	Polyclonal
<b>CONJUGATE:</b>	Unconjugated

### Additional Info

<b>ALTERNATE NAMES:</b>	transcortin, serpin A6, serine (or cysteine) proteinase inhibitor, clade A, (alpha-1 antiproteinase, antitrypsin) member 6, corticosteroid-binding globulin, corticosteroid binding globulin, Cbg, MGC112780, serine (or cysteine) peptidase inhibitor, member 6, Serpina6
<b>ACCESSION NO.:</b>	NP_001009663.1
<b>PROTEIN GI NO.:</b>	57527135
<b>OFFICIAL SYMBOL:</b>	Serpina6

GENE ID: 299270 (rat);

## Background

FOR RESEARCH USE ONLY

December 13, 2016