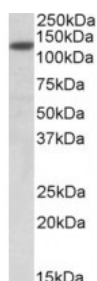




## SIRT1 Antibody

CATALOG NUMBER: 42-428



Western Blot (0.05ug/ml) staining of Jurkat lysate (35ug protein in RIPA buffer). Primary incubation was 1 hour. Detected by chemiluminescence.



Immunohistochemistry (3.8ug/ml) staining of paraffin embedded Human Skin. Steamed antigen retrieval with citrate buffer pH 6, AP-staining.

### Specifications

<b>SPECIES REACTIVITY:</b>	Human
<b>TESTED APPLICATIONS:</b>	ELISA, IHC-P, WB
<b>APPLICATIONS:</b>	ELISA: antibody detection limit dilution 1:64000. Western Blot: Approx 120kDa band observed in lysates of cell line Jurkat (calculated MW of 81.7kDa according to NP_036370.2). The observed molecular weight corresponds to earlier findings in literature with different antibodies (Cheng et al, Proc Natl Ac Immunohistochemistry: In paraffin embedded Human Skin shows perinuclear staining in select keratinocytes. Recommended concentration, 3-5ug/ml.
<b>POSITIVE CONTROL:</b>	1) Cat. No. 1205 - Jurkat Cell Lysate
<b>SPECIFICITY:</b>	This antibody is expected to recognize both reported isoforms (NP_036370.2; NP_001135970.1).
<b>IMMUNOGEN:</b>	SIRT1 antibody was raised against a 14 amino acid synthetic peptide near the internal region of SIRT1 (aa 577-590).
<b>HOST SPECIES:</b>	Goat

### Properties

<b>PURIFICATION:</b>	SIRT1 antibody was purified from goat serum by ammonium sulphate precipitation followed by antigen affinity chromatography using the immunizing peptide.
<b>PHYSICAL STATE:</b>	Liquid
<b>BUFFER:</b>	SIRT1 antibody is supplied in Tris saline, 0.02% sodium azide, pH 7.3 with 0.5% bovine serum albumin.
<b>CONCENTRATION:</b>	500 ug/mL
<b>STORAGE CONDITIONS:</b>	Aliquot and store at -20°C. Minimize freezing and thawing.
<b>CLONALITY:</b>	Polyclonal
<b>CONJUGATE:</b>	Unconjugated

### Additional Info

<b>ALTERNATE NAMES:</b>	sirtuin type 1, sir2-like 1, hSIR2, SIR2alpha, SIR2-like protein 1, OTTHUMP00000198112, OTTHUMP00000198111, NAD-dependent deacetylase sirtuin-1, SIR2L1, sirtuin 1, SIRT1
-------------------------	---

ACCESSION NO.:	NP_036370.2, NP_001135970.1
PROTEIN GI NO.:	7657575
OFFICIAL SYMBOL:	SIRT1
GENE ID:	23411

## Background

FOR RESEARCH USE ONLY

December 13, 2016