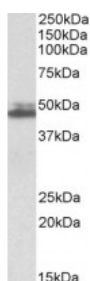




## SH3GL1 Antibody

CATALOG NUMBER: 42-410



Western Blot (0.3ug/ml) staining of K562 lysate (35ug protein in RIPA buffer). Primary incubation was 1 hour. Detected by chemiluminescence.

### Specifications

<b>SPECIES REACTIVITY:</b>	Human
<b>TESTED APPLICATIONS:</b>	ELISA, WB
<b>APPLICATIONS:</b>	ELISA: antibody detection limit dilution 1:32000. Western Blot: Approx 48kDa band observed in lysates of cell line K562 (calculated MW of 41.5kDa according to NP_003016.1. The observed molecular weight corresponds to earlier findings in literature with different antibodies (So et al, Proc Natl Acad Sci
<b>POSITIVE CONTROL:</b>	1) Cat. No. 1204 - K562 Cell Lysate
<b>IMMUNOGEN:</b>	SH3GL1 antibody was raised against a 12 amino acid synthetic peptide near the internal region of SH3GL1.
<b>HOST SPECIES:</b>	Goat

### Properties

<b>PURIFICATION:</b>	SH3GL1 antibody was purified from goat serum by ammonium sulphate precipitation followed by antigen affinity chromatography using the immunizing peptide.
<b>PHYSICAL STATE:</b>	Liquid
<b>BUFFER:</b>	SH3GL1 antibody is supplied in Tris saline, 0.02% sodium azide, pH 7.3 with 0.5% bovine serum albumin.
<b>CONCENTRATION:</b>	500 ug/mL
<b>STORAGE CONDITIONS:</b>	Aliquot and store at -20°C. Minimize freezing and thawing.
<b>CLONALITY:</b>	Polyclonal
<b>CONJUGATE:</b>	Unconjugated

### Additional Info

<b>ALTERNATE NAMES:</b>	extra eleven-nineteen leukemia fusion gene protein, extra 11-19 leukemia fusion, SH3 domain protein 2B, endophilin-2, endophilin-A2, SH3-containing protein EEN, SH3-containing Grb-2-like 1 protein, SH3 domain-containing GRB2-like protein 1, SH3 domain GRB2-like 1, EEN fusion partner of MLL, SH3P8, SH3D2B, MGC111371, EEN, CNSA1, SH3-domain GRB2-like 1, SH3GL1
<b>ACCESSION NO.:</b>	NP_003016.1
<b>PROTEIN GI NO.:</b>	4506929

OFFICIAL SYMBOL: SH3GL1

GENE ID: 6455

Background

FOR RESEARCH USE ONLY

December 13, 2016