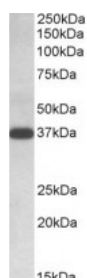


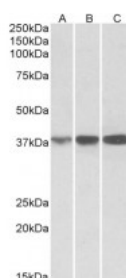


IDH3A Antibody

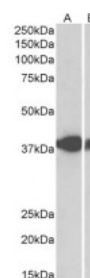
CATALOG NUMBER: 42-381



Western Blot (0.1ug/ml) staining of Human Lymph Nodes lysate (35ug protein in RIPA buffer). Primary incubation was 1 hour. Detected by chemiluminescence.



Western Blot (0.1ug/ml) staining of Human (A), Mouse (B) and Rat (C) Spleen lysates (35ug protein in RIPA buffer). Primary incubation was 1 hour. Detected by chemiluminescence.



Western Blot (0.3ug/ml) staining of Pig Spleen (A) and Pig Skeletal Muscle (B) lysates (35ug protein in RIPA buffer). Primary incubation was 1 hour. Detected by chemiluminescence.

Specifications

SPECIES REACTIVITY:	Human, Mouse, Pig, Rat
TESTED APPLICATIONS:	ELISA, WB
APPLICATIONS:	ELISA: antibody detection limit dilution 1:32000. Western Blot: Approx 37kDa band observed in lysates of Human Lymph Nodes, and of cell line DAUDI, and 38kDa in Human, Mouse and Rat Spleen lysates and in Pig Spleen and Skeletal Muscle lysates (calculated MW of 39.6kDa according to NP_005521.1). Recommen
POSITIVE CONTROL:	1) Cat. No. 1224 - Daudi Cell Lysate 2) Human Lymph Nodes
IMMUNOGEN:	IDH3A antibody was raised against a amino acid synthetic peptide near the C-Terminus of IDH3A.
HOST SPECIES:	Goat

Properties

PURIFICATION:	IDH3A antibody was purified from goat serum by ammonium sulphate precipitation followed by antigen affinity chromatography using the immunizing peptide.
PHYSICAL STATE:	Liquid
BUFFER:	IDH3A antibody is supplied in Tris saline, 0.02% sodium azide, pH 7.3 with 0.5% bovine serum albumin.
CONCENTRATION:	500 ug/mL
STORAGE CONDITIONS:	Aliquot and store at -20°C. Minimize freezing and thawing.
CLONALITY:	Polyclonal
CONJUGATE:	Unconjugated

Additional Info

ALTERNATE NAMES:	isocitric dehydrogenase subunit alpha, isocitrate dehydrogenase [NAD] subunit alpha, mitochondrial, isocitrate dehydrogenase (NAD+) alpha chain, NAD+-specific ICDH, NAD(H)-specific isocitrate dehydrogenase alpha subunit, NAD(+)-specific ICDH subunit alpha, H-IDH alpha, isocitrate dehydrogenase 3 (NAD+) alpha, IDH3A,
ACCESSION NO.:	NP_005521.1

PROTEIN GI NO.: 5031777

OFFICIAL SYMBOL: IDH3A

GENE ID: 3419

Background

FOR RESEARCH USE ONLY

December 13, 2016