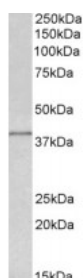


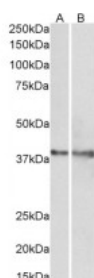


IDH3G Antibody

CATALOG NUMBER: 42-379



Western Blot (0.5ug/ml) staining of MCF7 lysate (35ug protein in RIPA buffer). Primary incubation was 1 hour. Detected by chemiluminescence.



Western Blot (1ug/ml) staining of Rat (A) and Pig (B) Heart lysate (35ug protein in RIPA buffer). Primary incubation was 1 hour. Detected by chemiluminescence.

Specifications

SPECIES REACTIVITY:	Human, Mouse, Pig, Rat
TESTED APPLICATIONS:	ELISA, WB
APPLICATIONS:	ELISA: antibody detection limit dilution 1:16000. Western Blot: Approx 38kDa band observed in lysates of cell line MCF7 and of Human, Mouse, Rat and Pig Heart (calculated MW of 41.5kDa according to NP_777358.1). Recommended concentration: 0.5-2ug/ml.
POSITIVE CONTROL:	1) Cat. No. 1219 - MCF7 Cell Lysate 2) Cat. No. 1301 - Human Heart Tissue Lysate 3) Cat. No. 1401 - Mouse Heart Tissue Lysate 4) Cat. No. 1461 - Rat Heart Tissue Lysate
SPECIFICITY:	This antibody is expected to recognize both reported isoforms (NP_004126.1; NP_777358.1).
IMMUNOGEN:	IDH3G antibody was raised against a amino acid synthetic peptide near the internal region of IDH3G (aa 337-350).
HOST SPECIES:	Goat

Properties

PURIFICATION:	IDH3G antibody was purified from goat serum by ammonium sulphate precipitation followed by antigen affinity chromatography using the immunizing peptide.
PHYSICAL STATE:	Liquid
BUFFER:	IDH3G antibody is supplied in Tris saline, 0.02% sodium azide, pH 7.3 with 0.5% bovine serum albumin.
CONCENTRATION:	500 ug/mL
STORAGE CONDITIONS:	Aliquot and store at -20°C. Minimize freezing and thawing.
CLONALITY:	Polyclonal
CONJUGATE:	Unconjugated

Additional Info

ALTERNATE NAMES:	isocitric dehydrogenase subunit gamma, isocitrate dehydrogenase, NAD(+)-specific, mitochondrial, gamma subunit, isocitrate dehydrogenase [NAD] subunit gamma, OTTHUMP00000025988, OTTHUMP00000025987, OTTHUMP00000025984, NAD+-specific ICDH, NAD(+)-specific ICDH subunit gamma, NAD (H)-specific isocitrate dehydrogenase gamma subunit, IDH-gamma, H-IDHG, isocitrate dehydrogenase 3 (NAD+) gamma, IDH3G
ACCESSION NO.:	NP_004126.1, NP_777358.1
PROTEIN GI NO.:	4758582
OFFICIAL SYMBOL:	IDH3G
GENE ID:	3421

Background

FOR RESEARCH USE ONLY

December 13, 2016