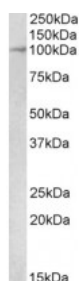




## Malt1 Antibody

CATALOG NUMBER: 42-376



Western Blot (2ug/ml) staining of Mouse  
Kidney lysate (35ug protein in RIPA  
buffer). Primary incubation was 1 hour.  
Detected by chemiluminescence.

### Specifications

<b>SPECIES REACTIVITY:</b>	Mouse, Rat
<b>TESTED APPLICATIONS:</b>	ELISA, WB
<b>APPLICATIONS:</b>	ELISA: antibody detection limit dilution 1:32000. Western Blot: Approx 100kDa band observed in Mouse and Rat Kidney lysates (calculated MW of 91.8kDa according to XP_225927.5). Recommended concentration: 1-3ug/ml.
<b>POSITIVE CONTROL:</b>	1) Cat. No. 1405 - Mouse Kidney Tissue Lysate 2) Cat. No. 1465 - Rat Kidney Tissue Lysate
<b>SPECIFICITY:</b>	This antibody is expected to recognize reported isoform 2 (XP_225927.5) only.
<b>IMMUNOGEN:</b>	Malt1 antibody was raised against a amino acid synthetic peptide near the internal region of Malt1 (Rat isoform 2).
<b>HOST SPECIES:</b>	Goat

### Properties

<b>PURIFICATION:</b>	Malt1 antibody was purified from goat serum by ammonium sulphate precipitation followed by antigen affinity chromatography using the immunizing peptide.
<b>PHYSICAL STATE:</b>	Liquid
<b>BUFFER:</b>	Malt1 antibody is supplied in Tris saline, 0.02% sodium azide, pH 7.3 with 0.5% bovine serum albumin.
<b>CONCENTRATION:</b>	500 ug/mL
<b>STORAGE CONDITIONS:</b>	Aliquot and store at -20°C. Minimize freezing and thawing.
<b>CLONALITY:</b>	Polyclonal
<b>CONJUGATE:</b>	Unconjugated

### Additional Info

<b>ALTERNATE NAMES:</b>	caspase-like protein, MALT-lymphoma associated translocation, MALT lymphoma-associated translocation, MALT associated translocation, MLT1, MLT, mucosa associated lymphoid tissue lymphoma translocation gene 1, Malt1, A630046N12, D430033E09Rik
<b>ACCESSION NO.:</b>	XP_225927.5

PROTEIN GI NO.:	293354987
OFFICIAL SYMBOL:	Malt1
GENE ID:	240354 (mouse); 307366 (rat);

## Background

FOR RESEARCH USE ONLY

December 13, 2016