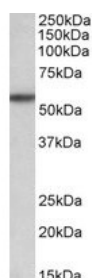




TGFBR1 Antibody

CATALOG NUMBER: 42-356



Western blot analysis of TGFBR1 in rat liver lysate (35 ug protein in RIPA buffer) using TGFBR1 Antibody at 0.1 ug/mL.

Specifications

SPECIES REACTIVITY:	Mouse, Rat
TESTED APPLICATIONS:	ELISA, WB
APPLICATIONS:	ELISA: Antibody detection limit dilution 1:64000. Western Blot: Approximately 55 kDa band observed in rat liver lysates (calculated MW of 55.6 kDa according to rat NP_036907.2). Recommended concentration: 0.1-0.3 ug/mL.
POSITIVE CONTROL:	1) Cat. No. 1464 - Rat Liver Tissue Lysate
SPECIFICITY:	This antibody is expected to recognize both reported isoforms (NP_004603.1; NP_001124388.1). The immunizing peptide represents part of a potential extracellular domain.
IMMUNOGEN:	TGFBR1 antibody was raised against a 14 amino acid synthetic peptide near the internal region of TGFBR1 (aa 50-63).
HOST SPECIES:	Goat

Properties

PURIFICATION:	TGFBR1 antibody was purified from goat serum by ammonium sulphate precipitation followed by antigen affinity chromatography using the immunizing peptide.
PHYSICAL STATE:	Liquid
BUFFER:	TGFBR1 antibody is supplied in Tris saline, 0.02% sodium azide, pH 7.3 with 0.5% bovine serum albumin.
CONCENTRATION:	500 ug/mL
STORAGE CONDITIONS:	Aliquot and store at -20°C. Minimize freezing and thawing.
CLONALITY:	Polyclonal
CONJUGATE:	Unconjugated

Additional Info

ALTERNATE NAMES:	activin A receptor type II-like kinase, 53kD, TGF-beta type I receptor, TGF-beta receptor type-1, TGF-beta receptor type I, TGFR-1, SKR4, LDS2A, LDS1A, ALK5, ALK-5, ACVRLK4, AAT5, transforming growth factor, beta receptor 1, TGFBR1, transforming growth factor-beta receptor type I, beta receptor I (activin A receptor type II-like kinase, 53kD), transforming growth factor beta receptor I, tbetaR-I, serine/threonine-protein kinase receptor
-------------------------	--

R4, activin receptor-like kinase 5, activin A receptor type II-like kinase, 53kDa

ACCESSION NO.: NP_004603.1, NP_001124388.1

PROTEIN GI NO.: 4759226

OFFICIAL SYMBOL: TGFBR1

GENE ID: 7046

Background

FOR RESEARCH USE ONLY

December 13, 2016