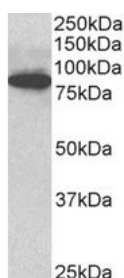




ODF2 Antibody

CATALOG NUMBER: 42-312



Western blot analysis of ODF2 in C57/B6 mouse CTL lysate (35 ug protein in RIPA buffer) using ODF2 Antibody at 3 ug/mL.

Specifications

SPECIES REACTIVITY:	Mouse
TESTED APPLICATIONS:	ELISA, WB
APPLICATIONS:	ELISA: Antibody detection limit dilution 1:128000. Western Blot: Approximately 85 kDa band observed in C57/B6 mouse CTL lysates (calculated MW of 95.4 kDa according to mouse NP_001106684.1). Recommended concentration: 1-3 ug/mL.
POSITIVE CONTROL:	1) C57/B6 Mouse CTL Lysates
SPECIFICITY:	This antibody is expected to recognize reported isoform 1 (NP_002531.3).
IMMUNOGEN:	ODF2 antibody was raised against a 13 amino acid synthetic peptide near the internal region of ODF2.
HOST SPECIES:	Goat

Properties

PURIFICATION:	ODF2 antibody was purified from goat serum by ammonium sulphate precipitation followed by antigen affinity chromatography using the immunizing peptide.
PHYSICAL STATE:	Liquid
BUFFER:	ODF2 antibody is supplied in Tris saline, 0.02% sodium azide, pH 7.3 with 0.5% bovine serum albumin.
CONCENTRATION:	500 ug/mL
STORAGE CONDITIONS:	Aliquot and store at -20°C. Minimize freezing and thawing.
CLONALITY:	Polyclonal
CONJUGATE:	Unconjugated

Additional Info

ALTERNATE NAMES:	sperm tail structural protein, outer dense fibre of sperm tails 2, outer dense fiber protein 2, outer dense fiber of sperm tails, 84-kD, outer dense fiber of sperm tails protein 2, cenexin 1, cancer/testis antigen 134, ODF84, ODF2/2, ODF2/1, MGC9034, MGC111096, FLJ44866, CT134, outer dense fiber of sperm tails 2, ODF2
ACCESSION NO.:	NP_002531.3, NP_702915.1
PROTEIN GI NO.:	24430181

OFFICIAL SYMBOL: ODF2

GENE ID: 4957

Background

FOR RESEARCH USE ONLY

December 13, 2016