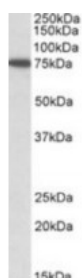




SNX1 Antibody

CATALOG NUMBER: 42-279



Western blot analysis of SNX1 in HeLa lysate (35 ug protein in RIPA buffer) using SNX1 Antibody at 1 ug/mL.

Specifications

SPECIES REACTIVITY:	Human
TESTED APPLICATIONS:	ELISA, WB
APPLICATIONS:	ELISA: Antibody detection limit dilution 1:64000. Western Blot: Approximately 75 kDa band observed in human HeLa lysate (calculated MW of 59.1 kDa according to NP_003090.2). The observed molecular weight corresponds to earlier findings with different antibodies from other commercial sources. Recommended concentration: 1-3 ug/mL.
POSITIVE CONTROL:	1) Cat. No. 1201 - HeLa Cell Lysate
SPECIFICITY:	This antibody is expected to recognize isoform a and c (NP_003090.2; NP_690039.1).
IMMUNOGEN:	SNX1 antibody was raised against a 14 amino acid synthetic peptide near the internal region of SNX1.
HOST SPECIES:	Goat

Properties

PURIFICATION:	SNX1 antibody was purified from goat serum by ammonium sulphate precipitation followed by antigen affinity chromatography using the immunizing peptide.
PHYSICAL STATE:	Liquid
BUFFER:	SNX1 antibody is supplied in Tris saline, 0.02% sodium azide, pH 7.3 with 0.5% bovine serum albumin.
CONCENTRATION:	500 ug/mL
STORAGE CONDITIONS:	Aliquot and store at -20°C. Minimize freezing and thawing.
CLONALITY:	Polyclonal
CONJUGATE:	Unconjugated

Additional Info

ALTERNATE NAMES:	SNX1, VPS5, HsT17379
ACCESSION NO.:	NP_003090.2, NP_690039.1
PROTEIN GI NO.:	23111034
OFFICIAL SYMBOL:	SNX1

GENE ID: 6642

Background

REFERENCES: 1) Mari M, Bujny MV, Zeuschner D, Geerts WJ, Griffith J, Petersen CM, Cullen PJ, Klumperman J, Geuze HJ, SNX1 defines an early endosomal recycling exit for sortilin and mannose 6-phosphate receptors. Traffic (Copenhagen, Denmark) 2008 Mar 9 (3): 380-93.

FOR RESEARCH USE ONLY

December 13, 2016