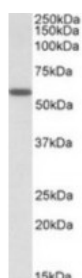




## DIXDC1 Antibody

CATALOG NUMBER: 42-274



Western blot analysis of DIXDC1 in human skeletal muscle lysate (35 ug protein in ripa buffer) using DIXDC1 Antibody at 0.5 ug/mL.

### Specifications

<b>SPECIES REACTIVITY:</b>	Human
<b>TESTED APPLICATIONS:</b>	ELISA, WB
<b>APPLICATIONS:</b>	ELISA: Antibody detection limit dilution 1:64000. Western Blot: Approximately 60 kDa band observed in human heart and skeletal muscle lysates (calculated MW of 53.9 kDa according to NP_219493.1). Recommended concentration: 0.5-2 ug/mL.
<b>POSITIVE CONTROL:</b>	1) Cat. No. 1375 - Human Skeletal Muscle Tissue Lysate
<b>SPECIFICITY:</b>	This antibody is expected to recognize both isoforms (NP_001033043.1; NP_219493.1).
<b>IMMUNOGEN:</b>	DIXDC1 antibody was raised against a 12 amino acid synthetic peptide near the internal region of DIXDC1.
<b>HOST SPECIES:</b>	Goat

### Properties

<b>PURIFICATION:</b>	DIXDC1 antibody was purified from goat serum by ammonium sulphate precipitation followed by antigen affinity chromatography using the immunizing peptide.
<b>PHYSICAL STATE:</b>	Liquid
<b>BUFFER:</b>	DIXDC1 antibody is supplied in Tris saline, 0.02% sodium azide, pH 7.3 with 0.5% bovine serum albumin.
<b>CONCENTRATION:</b>	500 ug/mL
<b>STORAGE CONDITIONS:</b>	Aliquot and store at -20°C. Minimize freezing and thawing.
<b>CLONALITY:</b>	Polyclonal
<b>CONJUGATE:</b>	Unconjugated

### Additional Info

<b>ALTERNATE NAMES:</b>	DIXDC1, KIAA1735, CCD1, DIX domain containing 1, DIXDC1
<b>ACCESSION NO.:</b>	NP_001033043.1, NP_219493.1
<b>PROTEIN GI NO.:</b>	83816971
<b>OFFICIAL SYMBOL:</b>	DIXDC1

GENE ID: 85458

---

### Background

**REFERENCES:** 1) Wu Y, Jing X, Ma X, Wu Y, Ding X, Fan W, Fan M. DIXDC1 co-localizes and interacts with gamma-tubulin in HEK293 cells. Cell biology international 2009 Jun 33 (6): 697-701.

---

FOR RESEARCH USE ONLY

December 13, 2016