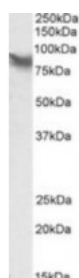




LPP Antibody

CATALOG NUMBER: 42-271



Western blot analysis of LPP in HepG2 lysate (35 ug protein in RIPA buffer) using LPP Antibody at 0.1 ug/mL.

Specifications

SPECIES REACTIVITY:	Human
TESTED APPLICATIONS:	ELISA, WB
APPLICATIONS:	ELISA: Antibody detection limit dilution 1:16000. Western Blot: Approximately 85 kDa band observed in human placenta lysates and in HEPG2 lysate (calculated MW of 65.7 kDa according to NP_005569.1). The observed molecular weight corresponds to earlier findings with different antibodies from other commercial sources. Recommended concentration: 0.1-0.3 ug/mL.
POSITIVE CONTROL:	1) Cat. No. 1211 - HepG2 Cell Lysate
IMMUNOGEN:	LPP antibody was raised against a 14 amino acid synthetic peptide near the internal region of LPP.
HOST SPECIES:	Goat

Properties

PURIFICATION:	LPP antibody was purified from goat serum by ammonium sulphate precipitation followed by antigen affinity chromatography using the immunizing peptide.
PHYSICAL STATE:	Liquid
BUFFER:	LPP antibody is supplied in Tris saline, 0.02% sodium azide, pH 7.3 with 0.5% bovine serum albumin.
CONCENTRATION:	500 ug/mL
STORAGE CONDITIONS:	Aliquot and store at -20°C. Minimize freezing and thawing.
CLONALITY:	Polyclonal
CONJUGATE:	Unconjugated

Additional Info

ALTERNATE NAMES:	LPP, Lipoma-preferred partner, LIM domain-containing preferred translocation partner in lipoma, LIM domain containing preferred translocation partner in lipoma, LPP,
ACCESSION NO.:	NP_005569.1
PROTEIN GI NO.:	5031887
OFFICIAL SYMBOL:	LPP

GENE ID: 4026

Background

REFERENCES: 1) Gorenne I, Jin L, Yoshida T, Sanders JM, Sarembock IJ, Owens GK, Somlyo AP, Somlyo AV. LPP expression during in vitro smooth muscle differentiation and stent-induced vascular injury. Circ Res. 2006 Feb 17;98(3):378-85.

FOR RESEARCH USE ONLY

December 13, 2016