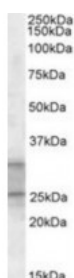




## E2F6 Antibody

CATALOG NUMBER: 42-237



Western blot analysis of E2F6 in human skeletal muscle lysate (35 ug protein in ripa buffer) using E2F6 Antibody at 1 ug/mL.

### Specifications

<b>SPECIES REACTIVITY:</b>	Human
<b>TESTED APPLICATIONS:</b>	ELISA, WB
<b>APPLICATIONS:</b>	ELISA: Antibody detection limit dilution 1:4000. Western Blot: Approximately 33 kDa band observed in human skeletal muscle lysates (calculated MW of 31.8 kDa according to NP_937987.2). Recommended concentration: 1-3 ug/mL.
<b>POSITIVE CONTROL:</b>	1) Cat. No. 1375 - Human Skeletal Muscle Tissue Lysate
<b>IMMUNOGEN:</b>	E2F6 antibody was raised against a 13 amino acid synthetic peptide near the C-Terminus of E2F6.
<b>HOST SPECIES:</b>	Goat

### Properties

<b>PURIFICATION:</b>	E2F6 antibody was purified from goat serum by ammonium sulphate precipitation followed by antigen affinity chromatography using the immunizing peptide.
<b>PHYSICAL STATE:</b>	Liquid
<b>BUFFER:</b>	E2F6 antibody is supplied in Tris saline, 0.02% sodium azide, pH 7.3 with 0.5% bovine serum albumin.
<b>CONCENTRATION:</b>	500 ug/mL
<b>STORAGE CONDITIONS:</b>	Aliquot and store at -20°C. Minimize freezing and thawing.
<b>CLONALITY:</b>	Polyclonal
<b>CONJUGATE:</b>	Unconjugated

### Additional Info

<b>ALTERNATE NAMES:</b>	E2F6, E2F transcription factor 6, isoform 1, MGC111545, E2F-6, E2F6
<b>ACCESSION NO.:</b>	NP_937987.2
<b>PROTEIN GI NO.:</b>	109637795
<b>OFFICIAL SYMBOL:</b>	E2F6
<b>GENE ID:</b>	1876

