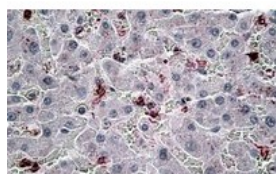




CCL20 Antibody

CATALOG NUMBER: 42-213



Immunohistochemistry staining of CCL20 in paraffin embedded human liver using CCL20 Antibody at 6 u. Steamed antigen retrieval with citrate buffer pH 6, AP-staining.

Specifications

SPECIES REACTIVITY:	Human
TESTED APPLICATIONS:	ELISA
APPLICATIONS:	ELISA: Antibody detection limit dilution 1:16000. Immunohistochemistry: In paraffin embedded human liver shows local staining between the hepatocytes. Recommended concentration, 6-8 ug/mL.
IMMUNOGEN:	CCL20 antibody was raised against a 12 amino acid synthetic peptide near the internal region of CCL20.
HOST SPECIES:	Goat

Properties

PURIFICATION:	CCL20 antibody was purified from goat serum by ammonium sulphate precipitation followed by antigen affinity chromatography using the immunizing peptide.
PHYSICAL STATE:	Liquid
BUFFER:	CCL20 antibody is supplied in Tris saline, 0.02% sodium azide, pH 7.3 with 0.5% bovine serum albumin.
CONCENTRATION:	500 ug/mL
STORAGE CONDITIONS:	Aliquot and store at -20°C. Minimize freezing and thawing.
CLONALITY:	Polyclonal
CONJUGATE:	Unconjugated

Additional Info

ALTERNATE NAMES:	CCL20, small inducible cytokine subfamily A (Cys-Cys), member 20, macrophage inflammatory protein 3 alpha, exodus-1, ST38, SCYA20, MIP3A, MIP-3a, LARC, CKb4, chemokine (C-C motif) ligand 20, CCL20
ACCESSION NO.:	NP_004582.1, NP_001123518.1
PROTEIN GI NO.:	4759076
OFFICIAL SYMBOL:	CCL20
GENE ID:	6364

Background

REFERENCES: 1) Punj V, Matta H, Schamus S, Yang T, Chang Y, Chaudhary PM, Induction of CCL20 production by Kaposi sarcoma-associated herpesvirus: role of viral FLICE inhibitory protein K13-induced NF-kappaB activation. Blood 2009 May 113 (22): 5660-8.

FOR RESEARCH USE ONLY

December 13, 2016